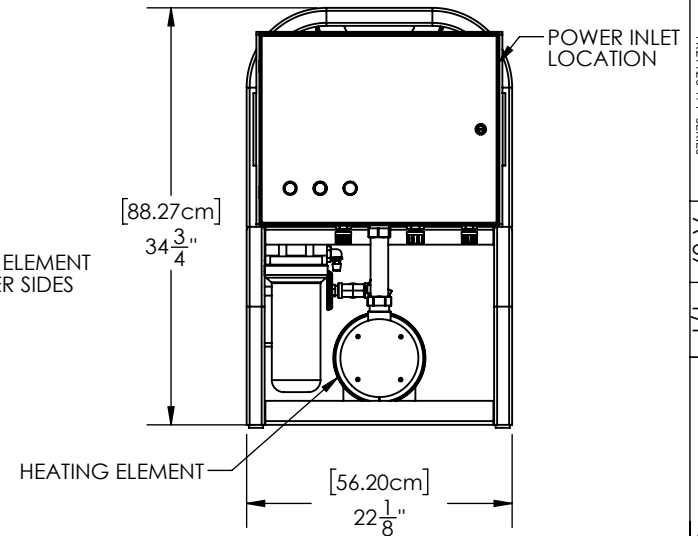
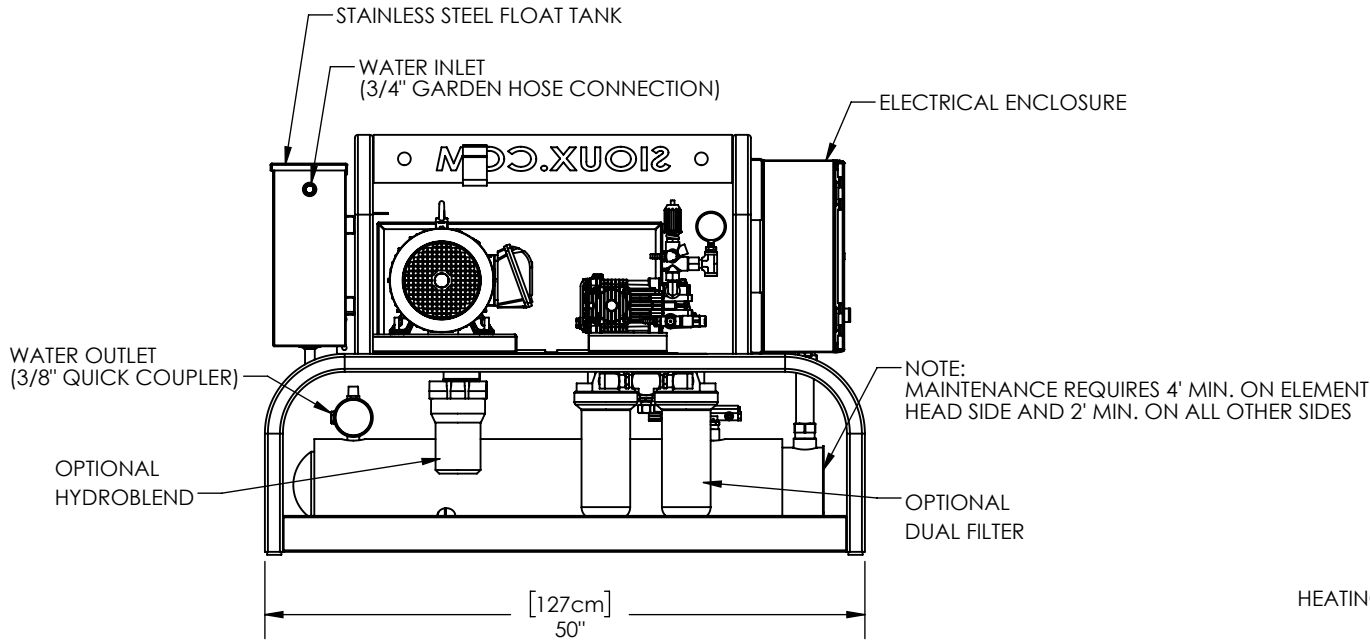


APPLICABLE MACHINES		
MODEL	APPROX. WEIGHT	
	LB	KG
60HZ UNITS		
EN0.8S250-60	725	330
EN2.0P1200-60	725	330
EN2.0P1800-60	750	340
EN2.0P3000-60	775	352
50HZ UNITS		
EN0.8S250-50	725	330
EN2.5P1200-50	725	330
EN2.5P1800-50	750	340
EN2.5P3000-50	775	352

**NOTE: CASTERS ADD 8" (20.32cm) TO HEIGHT
SKID WILL ADD 6" (15.24cm) TO HEIGHT**



Copyright © 2010 SIOUX CORPORATION. This information is property of Sioux Corporation, is subject to recall at any time, and is not to be used in any way detrimental to Sioux's interest. Use of material is subject to the Terms of Website Use listed on the www.siuox.com website.

PROPRIETARY AND CONFIDENTIAL THE INFORMATION CONTAINED IN THIS DRAWING IS THE SOLE PROPERTY OF SIOUX CORP. ANY REPRODUCTION IN PART OR AS A WHOLE WITHOUT WRITTEN PERMISSION OF SIOUX CORP IS PROHIBITED. DO NOT SCALE DRAWING	UNLESS NOTED: DIMENSIONS	DRN LN 4/22/14	SIOUX CORPORATION ONE SIOUX PLAZA, BERESFORD, SD 57004		
	INCHES	CHK			EN-SERIES SINGLE ELEMENT P-SERIES NON-XP MACHINES
	TOLERANCES	QC	SIZE A	SCALE 1:16	FILE EN-NO.1 FRAME NON-XP
	LINEAR: ±.0625 [1/16] ANGULAR: ±2°	THIRD-ANGLE PROJECTION	FR21120-W P-SERIES		REV A-07 SH 1/1

DWG NO. FR21120-W P-SERIES
 REV A-07 SHEET 1/1