

APPLICABLE MACHINES

MODELS	WEIGHT	
	LB	KG
60HZ UNITS		
EN1.6S250-60	600	273
EN2.0S250-60	500	227
EN3.6P1200-60	625	284
EN4.0P1800-60	700	318
EN4.0P3000-60	950	432
50HZ UNITS		
EN1.6S250-50	600	273
EN2.4S250-50	900	409
EN5.0P1200-50	625	284
EN5.0P1800-50	700	318
EN5.0P3000-50	950	432

**NOTE: CASTERS ADD 8" (20.32cm) TO HEIGHT
SKID WILL ADD 6"(15.24cm) TO HEIGHT**

WATER INLET
(3/4" GARDEN HOSE CONNECTION)

STAINLESS STEEL FLOAT TANK

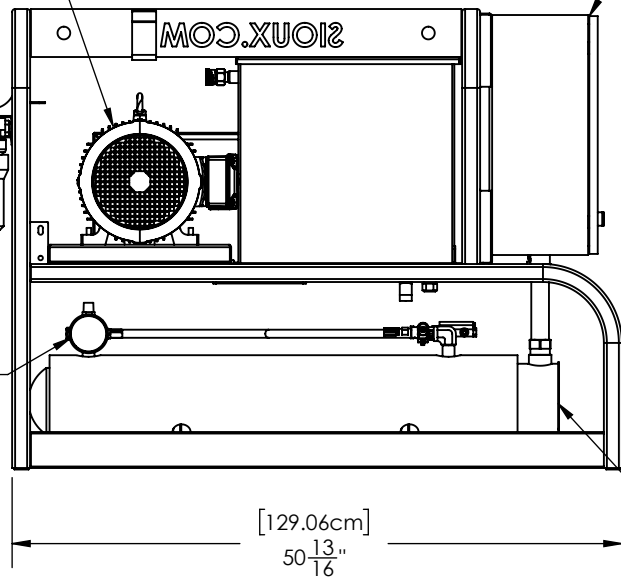
TEFC MOTOR

ELECTRICAL ENCLOSURE

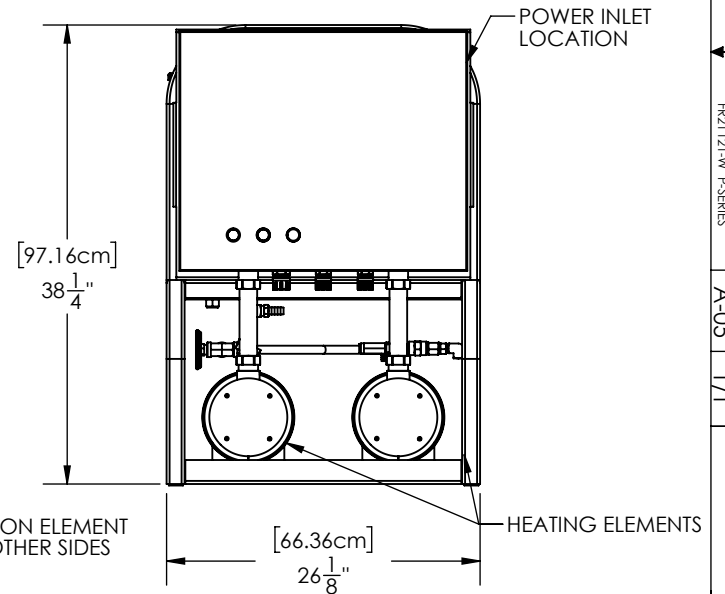
OPTIONAL HYDROBLEND

OPTIONAL DUAL FILTER

WATER OUTLET
(3/8" QUICK COUPLER)



NOTE:
MAINTENANCE REQUIRES 4' MIN. ON ELEMENT
HEAD SIDE AND 2' MIN. ON ALL OTHER SIDES



Copyright © 2010 SIOUX CORPORATION. This information is property of Sioux Corporation, is subject to recall at any time, and is not to be used in any way detrimental to Sioux's interest. Use of material is subject to the Terms of Website Use listed on the www.siuox.com website.

PROPRIETARY AND CONFIDENTIAL
THE INFORMATION CONTAINED
IN THIS DRAWING IS THE SOLE
PROPERTY OF SIOUX CORP.
ANY REPRODUCTION IN PART OR
AS A WHOLE WITHOUT WRITTEN
PERMISSION OF SIOUX CORP
IS PROHIBITED.

UNLESS NOTED:
DIMENSIONS
INCHES
TOLERANCES
LINEAR: ±.0625
[1/16]
ANGULAR: ±2°

DRN LN 4/24/14
CHK
QC
THIRD-ANGLE PROJECTION

SIOUX CORPORATION
ONE SIOUX PLAZA, BERESFORD, SD 57004

EN-SERIES DUAL ELEMENT P-SERIES NON-XP MACHINES

SIZE A SCALE 1:16 FILE FR21121-W FORWARD PLUMBED NON-XP #2 FRAME

FR21121-W P-SERIES

REV **A-05** SH 1/1

DO NOT SCALE DRAWING

DWG NO: FR21121-W P-SERIES REV A-05 SHEET 1/1