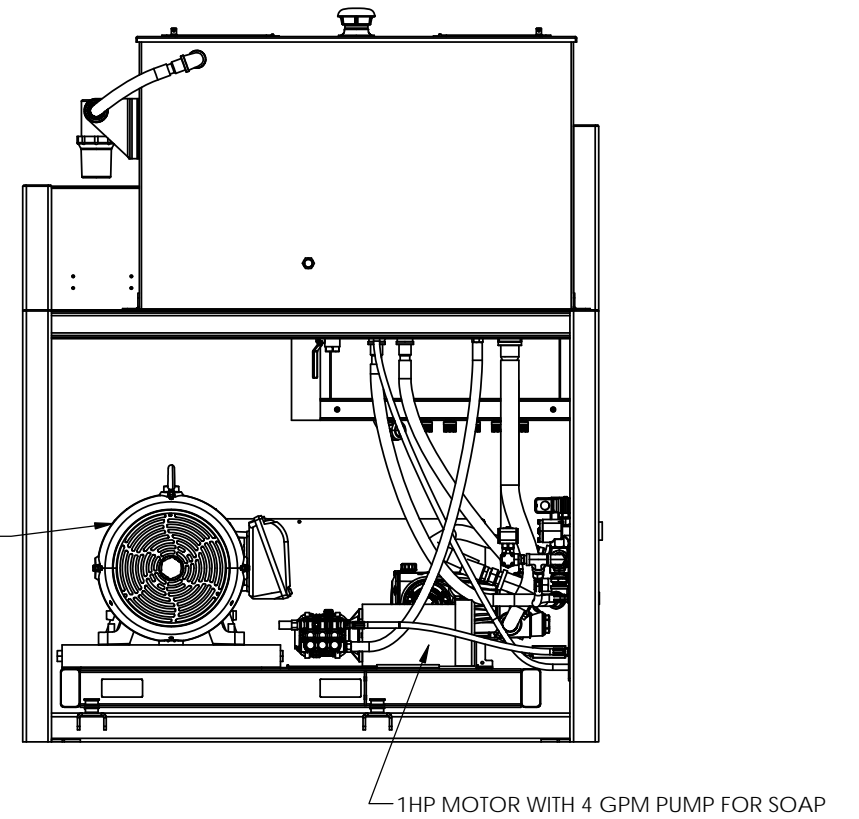
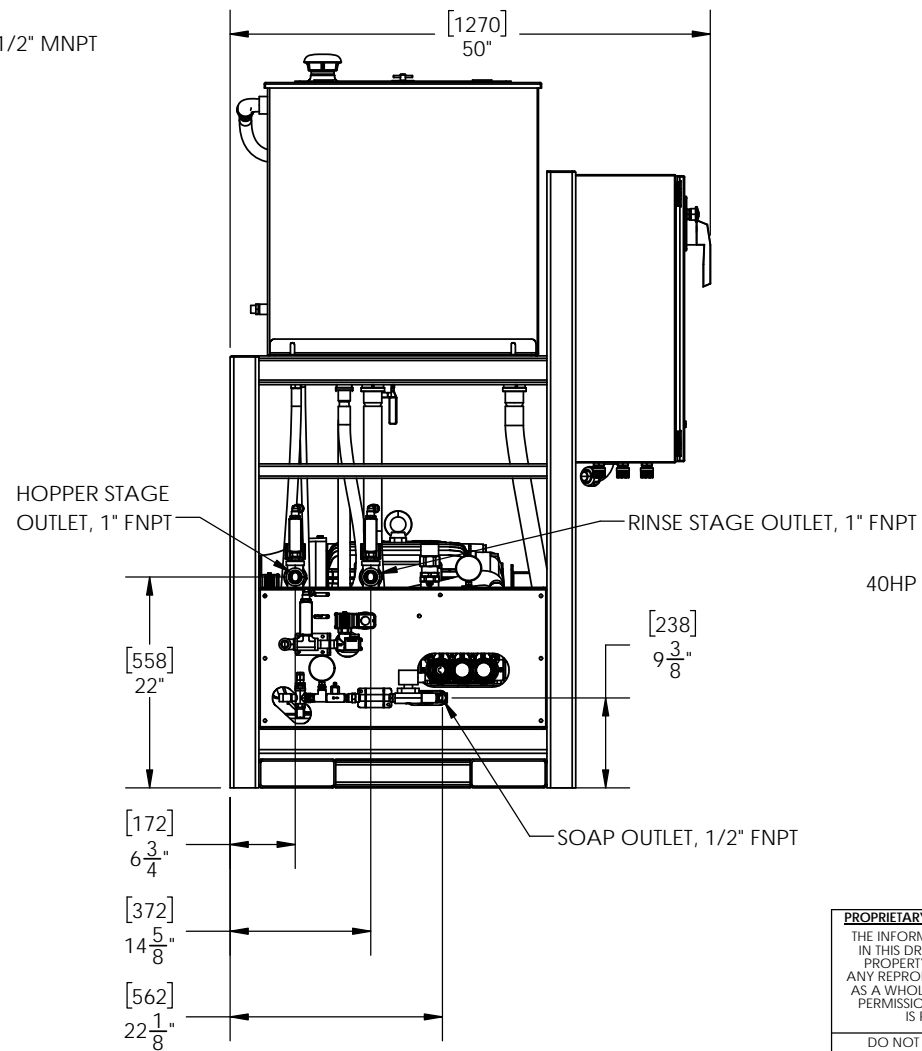
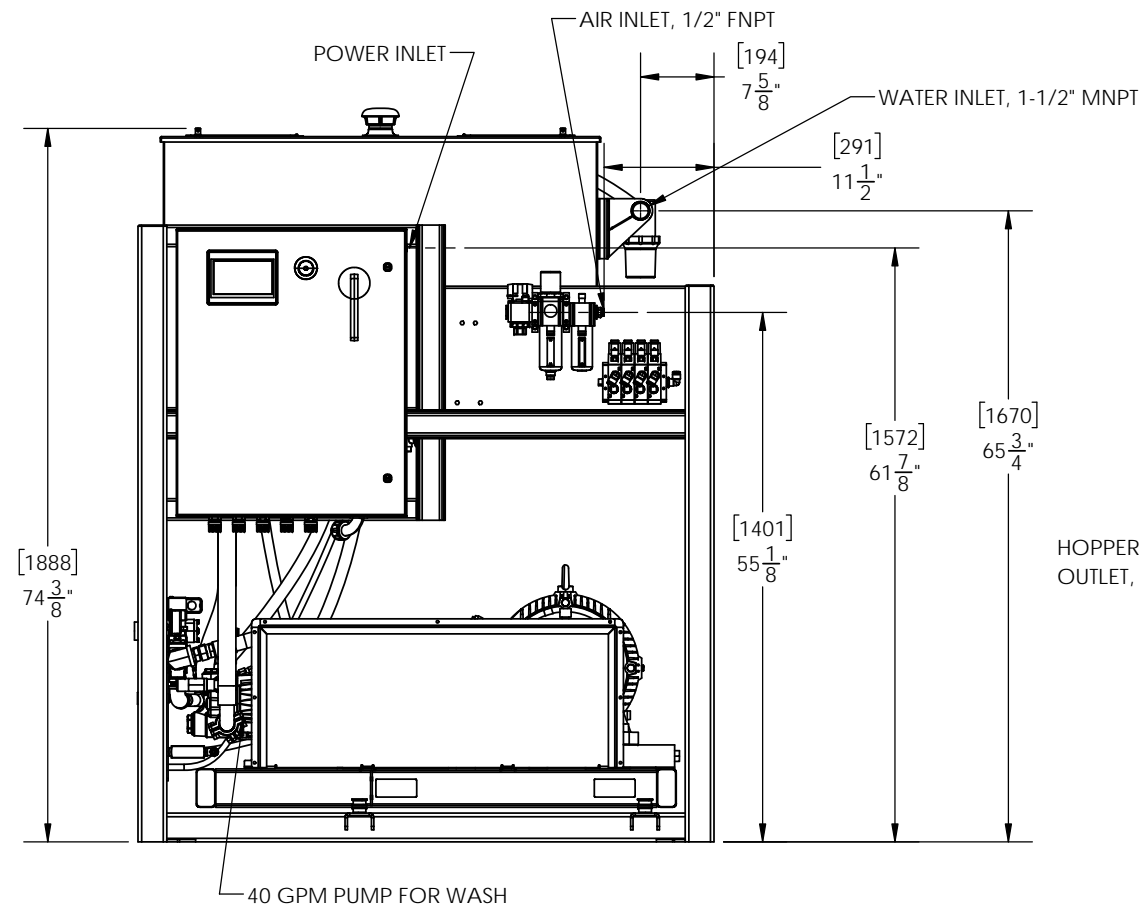
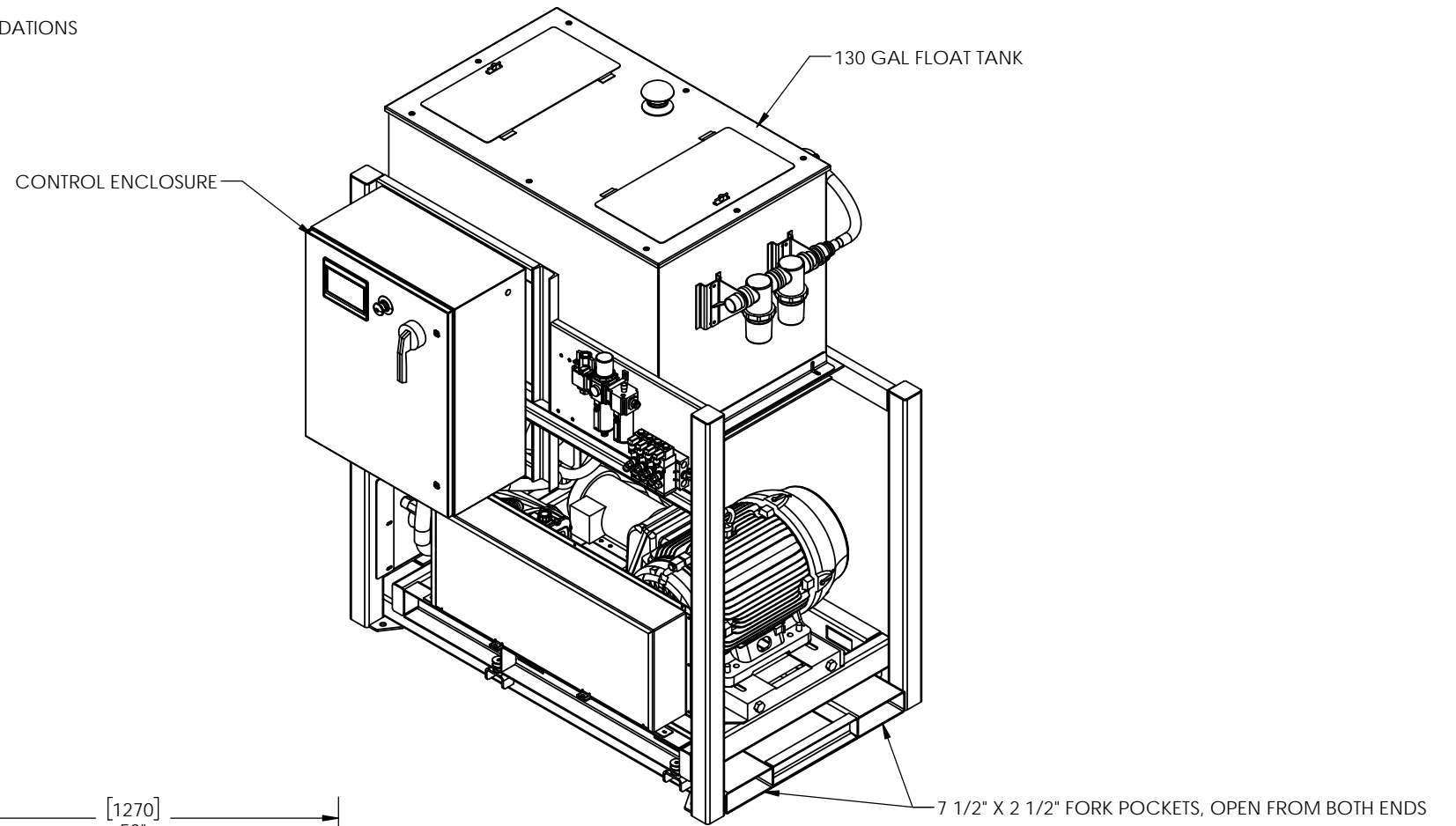
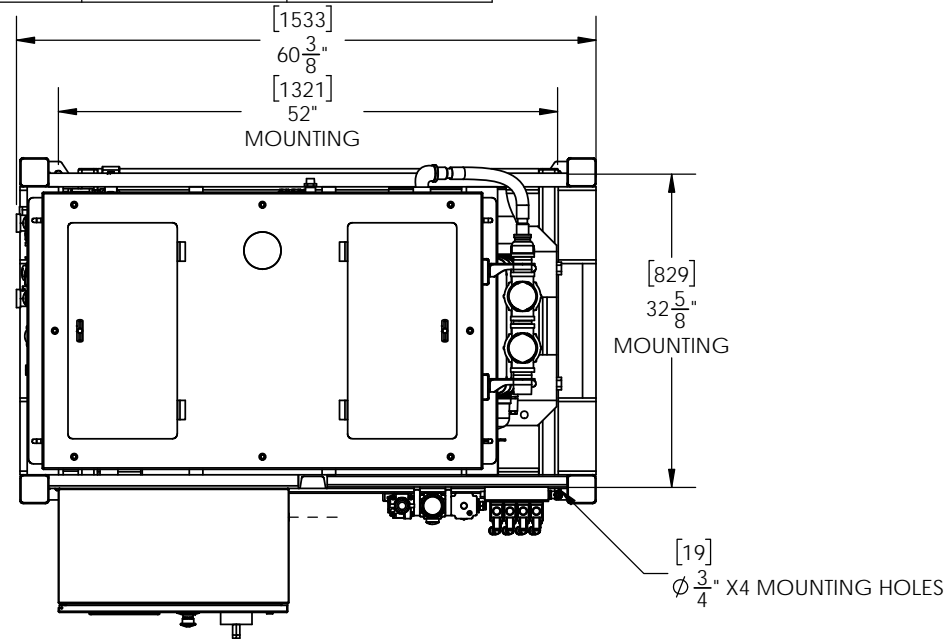


APPLICABLE MACHINES		
MODEL	APPROX. WEIGHT	
	LB	KG
TW-40	1600	725

SEE SECOND PAGE FOR INSTALLATION REQUIREMENTS AND RECOMMENDATIONS



REV.	DESCRIPTION	DATE	BY
A-06	ADDED ADDITIONAL ELECTRICAL REQUIREMENTS	03/22/24	JZ
A-05	WATER INLET UPDATE	09/01/23	JZ
A-04	ADDED PASSTHROUGHS	06/20/23	JZ
A-03	RAISED FLOAT TANK	05/20/22	JZ
A-02	UPDATED STEEL FITTINGS	03/17/22	LN

PROPRIETARY AND CONFIDENTIAL
 THE INFORMATION CONTAINED IN THIS DRAWING IS THE SOLE PROPERTY OF SIOUX CORP. ANY REPRODUCTION IN PART OR AS A WHOLE WITHOUT WRITTEN PERMISSION OF SIOUX CORP IS PROHIBITED.
 DO NOT SCALE DRAWING

UNLESS NOTED:
 DIMENSIONS IN INCHES, [mm] FOR REFERENCE ONLY
 TOLERANCES
 LINEAR: ±[13] 1/2
 ANGULAR: ±2°

DRN JZ 8/6/2021
 CHK LN 10/05/21
 SIZE B SCALE 1:20
 THIRD-ANGLE PROJECTION

SIOUX
 SIOUX CORPORATION, ONE SIOUX PLAZA, BERESFORD, SD 57004
 TW-40 POWER UNIT

GA24222 REV A-06 SH 1/2

DWG NO. GA24222 REV A-06 SHEET 1/2

SIoux TW40 POWER UNIT INSTALLATION RECOMMENDATIONS

HOOKUP REQUIREMENTS:

ELECTRICAL CONNECTION:

- 208V 3PH 200A
- 230V 3PH 150A
- 460V 3PH 100A
- 575V 3PH 70A

WATER CONNECTION:

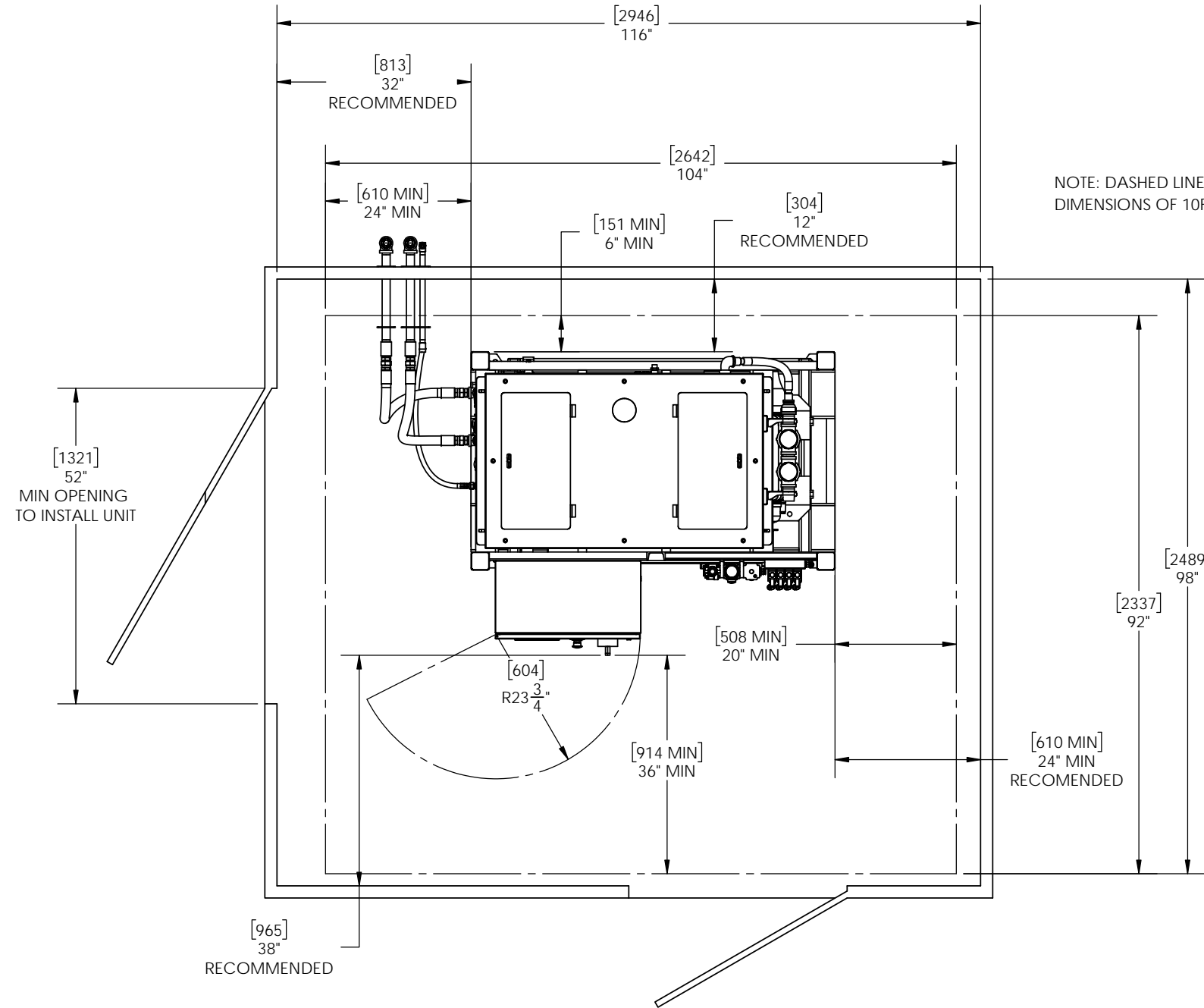
- 40 GPM @ 40 PSI MINIMUM

COMPRESSED AIR:

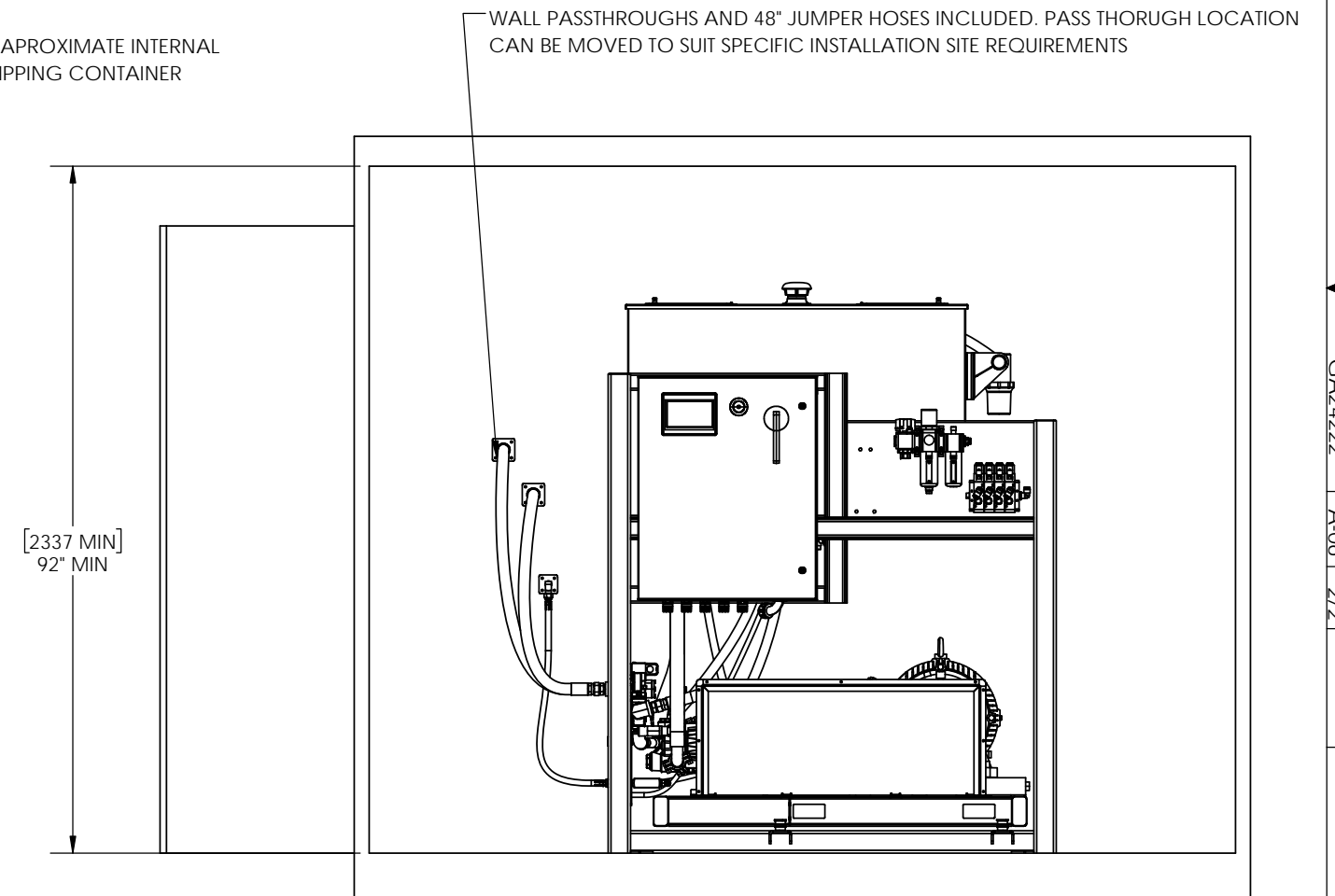
- 10 CFM @ 100 PSI FOR 4 MINUTES

ROOM REQUIREMENTS

- ENSURE ROOM IS HEATED TO KEEP POWER UNIT COMPONENTS FROM FREEZING
- SEE DIMENSIONS BELOW FOR RECOMMENDED ROOM SIZING
- MAX AMBIENT TEMP OF 100° F. VENTILATION MAY BE NEEDED



NOTE: DASHED LINES SHOW APPROXIMATE INTERNAL DIMENSIONS OF 10FT ISO SHIPPING CONTAINER



PROPRIETARY AND CONFIDENTIAL

THE INFORMATION CONTAINED IN THIS DRAWING IS THE SOLE PROPERTY OF SIOUX CORP. ANY REPRODUCTION IN PART OR AS A WHOLE WITHOUT WRITTEN PERMISSION OF SIOUX CORP IS PROHIBITED.

DO NOT SCALE DRAWING

UNLESS NOTED:

DIMENSIONS IN INCHES, [mm] FOR REFERENCE ONLY

TOLERANCES

LINEAR: \pm [13] 1/2

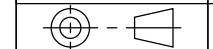
ANGULAR: \pm 2°

DRN JZ 8/6/2021

CHK LN 10/05/21

SIZE B SCALE 1:24

THIRD-ANGLE PROJECTION



SIoux

SIOUX CORPORATION, ONE SIOUX PLAZA, BERESFORD, SD 57004

TW-40 POWER UNIT

GA24222

REV A-06

SH 2/2

DWG NO. GA24222 REV A-06 SHEET 2/2