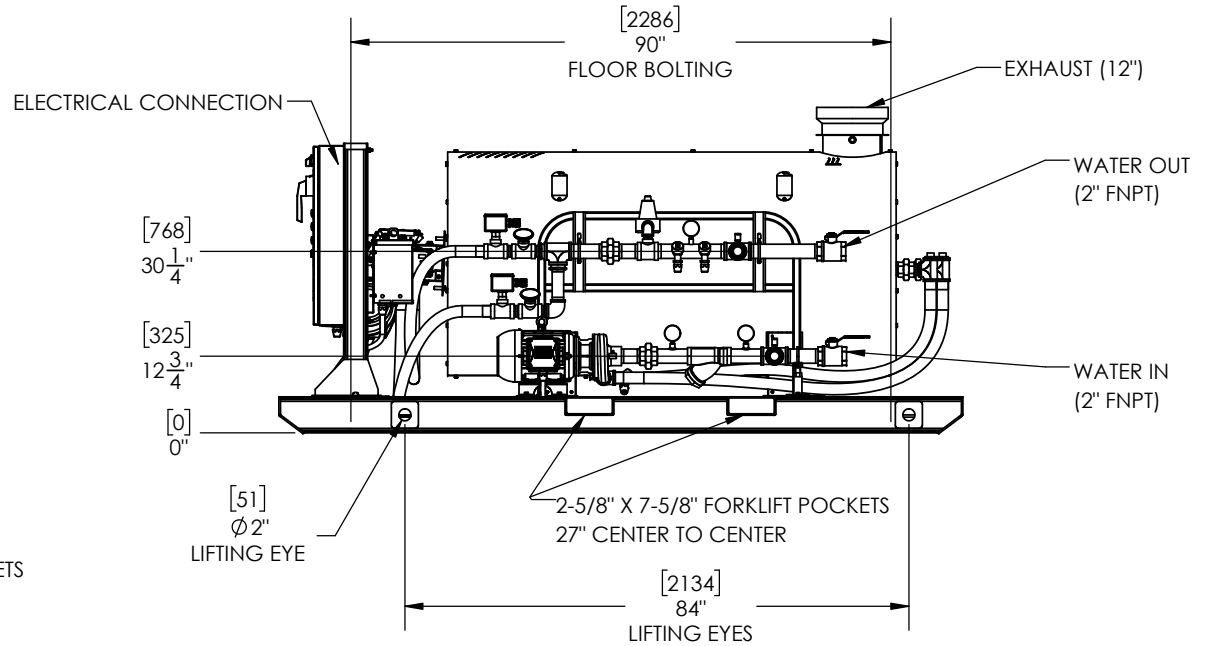
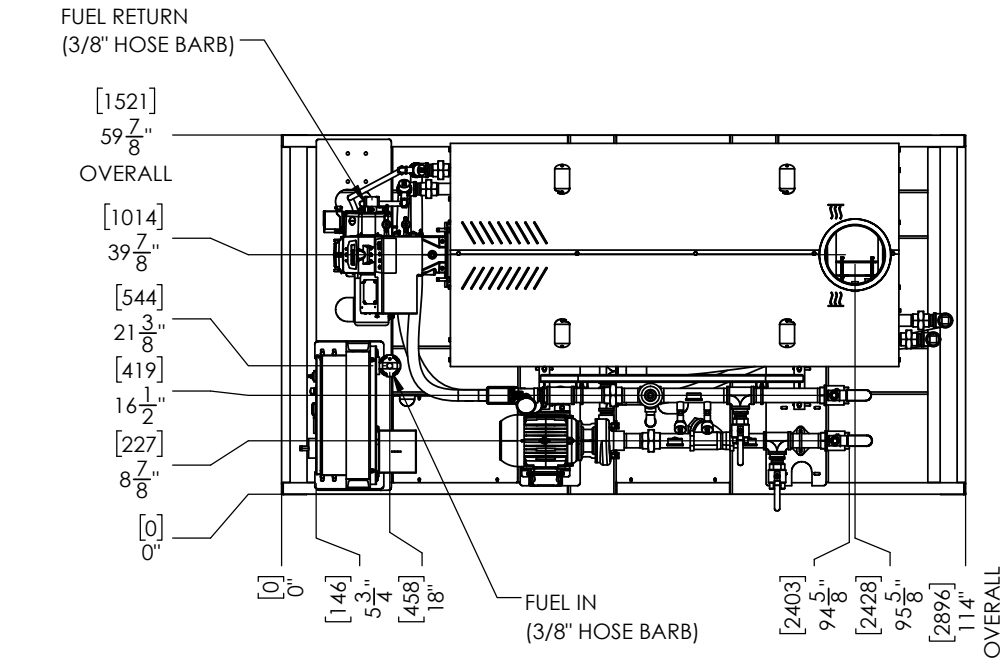
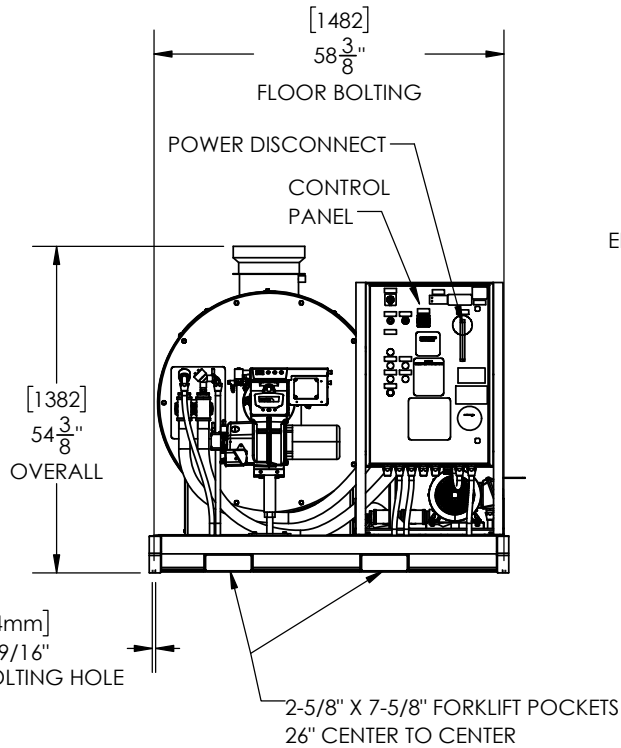


MODEL	APPROX. WEIGHT	
	LB	KG
HM-1.7 OIL	3600	1633

NOTE: SUGGESTED MINIMUM CLEARANCES FOR SERVICE ACCESS ARE 36" (914 mm) ON ALL SIDES. ALLOW AT LEAST 72" (1829 mm) AT THE FRONT OR REAR OF HEATER FOR REMOVAL OF THE COIL.



**PROPRIETARY AND CONFIDENTIAL**  
 THE INFORMATION CONTAINED IN THIS DRAWING IS THE SOLE PROPERTY OF SIOUX CORP. ANY REPRODUCTION IN PART OR AS A WHOLE WITHOUT WRITTEN PERMISSION OF SIOUX CORP IS PROHIBITED.  
 DO NOT SCALE DRAWING

UNLESS NOTED:  
 DIMENSIONS IN INCHES. (mm) FOR REFERENCE ONLY.  
 TOLERANCES  
 LINEAR: ±1/2"  
 ANGULAR: ±2°

DRN LN 12/7/2020  
 CHK JZ 12/15/2020  
 QC

**SIOUX CORPORATION**  
 ONE SIOUX PLAZA, BERESFORD, SD 57004

HM-1.7 OIL

REV.	DESCRIPTION	DATE	BY	TO
A-03	UPDATED CALLOUTS/DIM.	07/26/21	TO	
A-02	UPDATED CALLOUTS/DIM.	06/25/21	TO	
A-01	ORIGINAL	12/15/20	JZ	

THIRD-ANGLE PROJECTION  
 SIZE A SCALE 1:32 FILE GA23799 - HM-1.7 OIL  
**GA23799** REV **A-03** SH 1/1

DWG NO. GA23799 REV A-03 SHEET 1/1