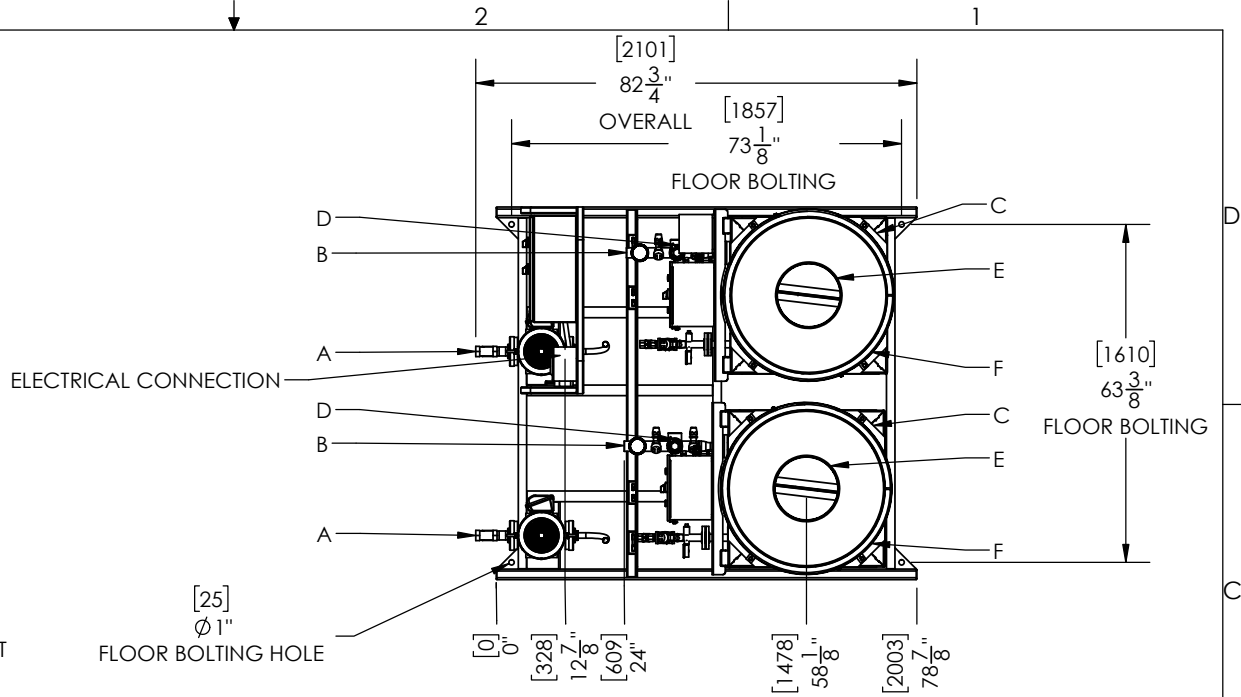


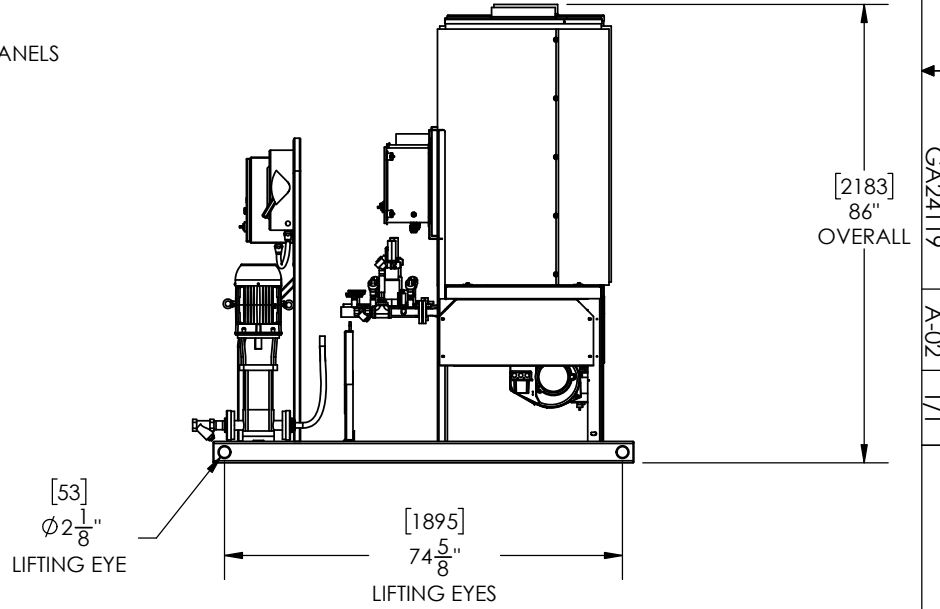
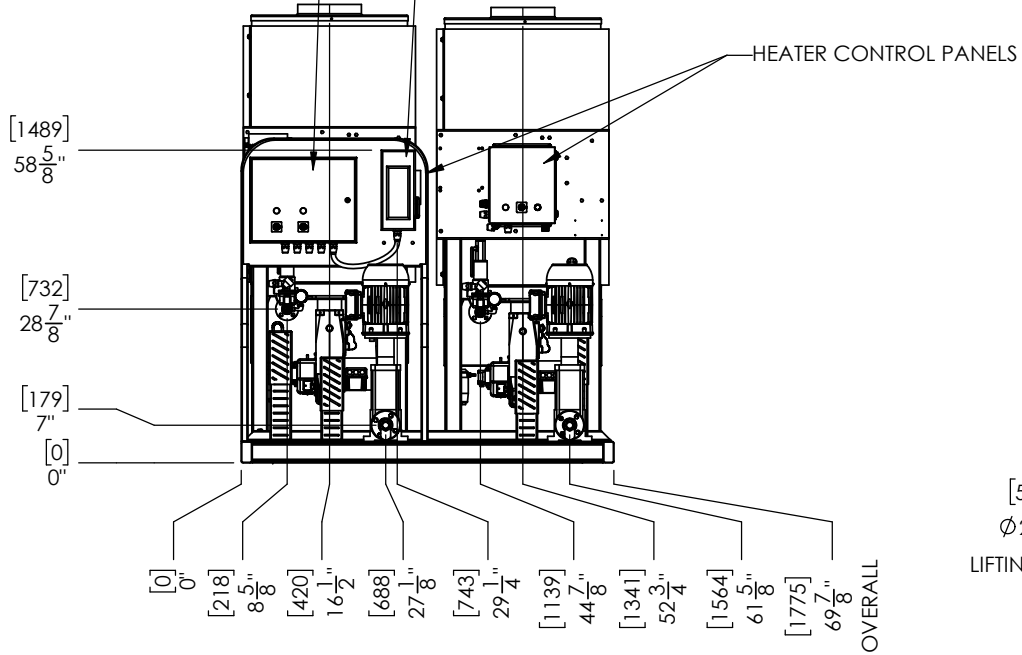
APPLICABLE MACHINES		
MODEL	APPROX. WEIGHT	
	LB	KG
MS-2 OIL	3000	1361

LETTER	DESCRIPTION
A	WATER IN (1-1/4" FNPT)
B	WATER OUT (1" FNPT)
C	FUEL IN (3/8" HOSE BARB)
D	RELIEF VALVE
E	EXHAUST (12")
F	CONDENSATE DRAIN (UNDER HEATER) (1/2" MNPT)

NOTE: SUGGESTED MINIMUM CLEARANCES FOR SERVICE ACCESS ARE 36" (914 mm) ON ALL SIDES.



MAIN CONTROL PANEL POWER DISCONNECT FLOOR BOLTING HOLE $\phi 1"$



PROPRIETARY AND CONFIDENTIAL
 THE INFORMATION CONTAINED IN THIS DRAWING IS THE SOLE PROPERTY OF SIOUX CORP. ANY REPRODUCTION IN PART OR AS A WHOLE WITHOUT WRITTEN PERMISSION OF SIOUX CORP IS PROHIBITED.

UNLESS NOTED:	DRN TO 6/17/2021
DIMENSIONS IN INCHES. (mm) FOR REFERENCE ONLY.	CHK JL 6/22/2021
TOLERANCES	QC
THIRD-ANGLE PROJECTION	SIZE A
LINEAR: $\pm 1/2"$	SCALE 1:36
ANGULAR: $\pm 2^\circ$	FILE

SIOUX CORPORATION
 ONE SIOUX PLAZA, BERESFORD, SD 57004

REV.	DESCRIPTION	DATE	BY	DO NOT SCALE DRAWING
A-02	UPDATED CALLOUTS	07/30/21	TO	
A-01	APPROVED FOR RELEASE	06/22/21	JL	

MS-2 OIL		GA24119 - MS-2 OIL	
GA24119		REV A-02	SH 1/1

DWG NO. GA24119 REV A-02 SHEET 1/1