

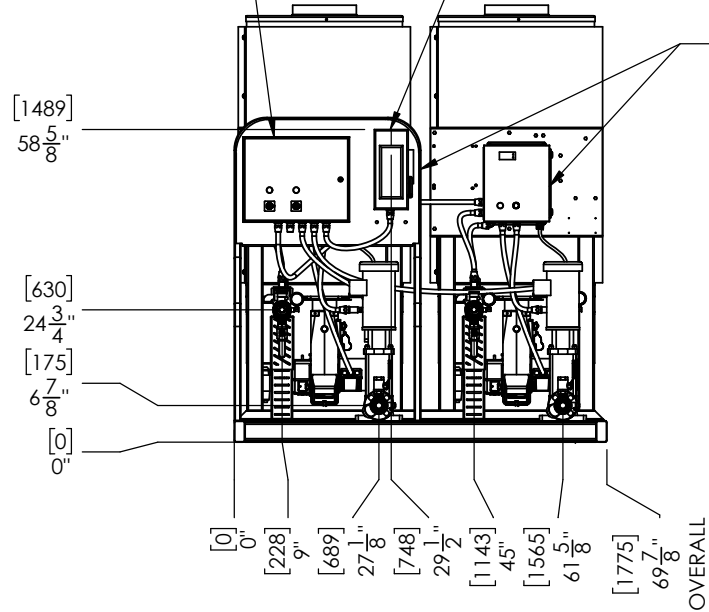
APPLICABLE MACHINES		
MODEL	APPROX. WEIGHT	
	LB	KG
M-2 OIL	3000	1361

LETTER	DESCRIPTION
A	WATER IN (1-1/2" FNPT)
B	WATER OUT (2" FNPT)
C	FUEL IN (3/8" HOSE BARB)
D	RELIEF VALVE
E	EXHAUST (12")
F	CONDENSATE DRAIN (UNDER HEATER) (1/2" MNPT)

NOTE: SUGGESTED MINIMUM CLEARANCES FOR SERVICE ACCESS ARE 36" (914 mm) ON ALL SIDES.

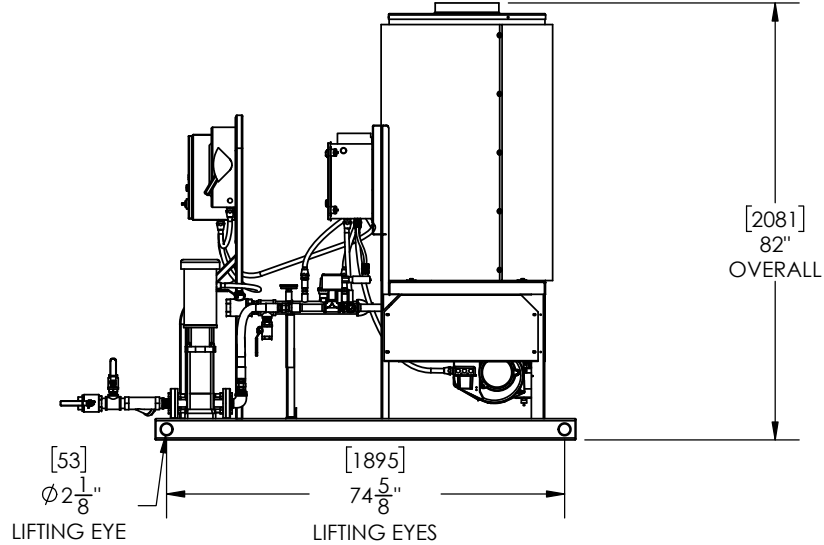
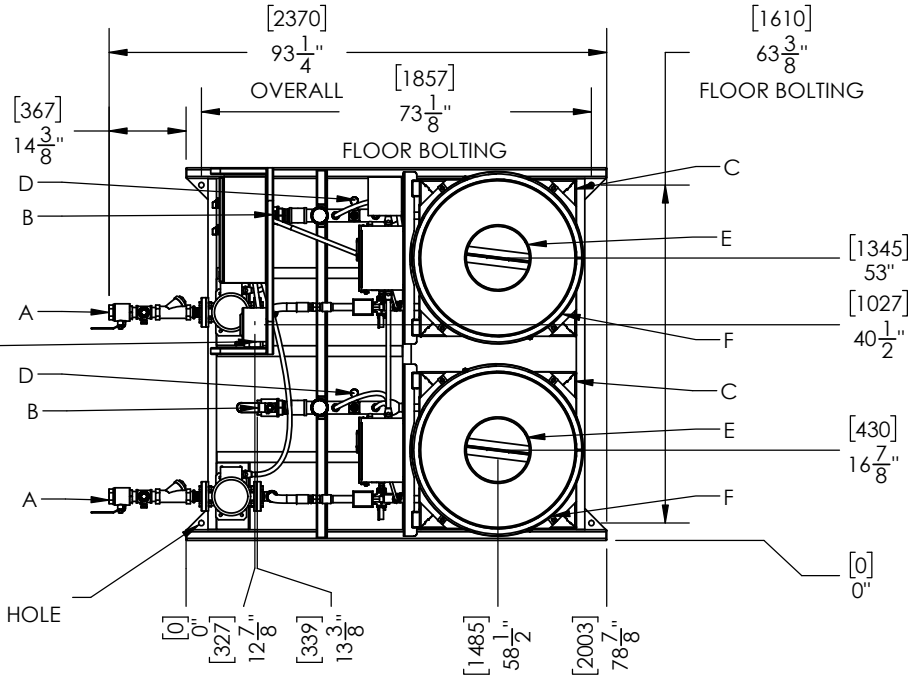
MAIN CONTROL PANEL
POWER DISCONNECT

HEATER CONTROL PANELS



ELECTRICAL CONNECTION

[25] Ø1" FLOOR BOLTING HOLE



PROPRIETARY AND CONFIDENTIAL
THE INFORMATION CONTAINED IN THIS DRAWING IS THE SOLE PROPERTY OF SIOUX CORP. ANY REPRODUCTION IN PART OR AS A WHOLE WITHOUT WRITTEN PERMISSION OF SIOUX CORP IS PROHIBITED.

UNLESS NOTED:
DIMENSIONS IN INCHES. (mm) FOR REFERENCE ONLY.
TOLERANCES
LINEAR: ±1/2"
ANGULAR: ±2°

DRN TO 5/21/2021
CHK JL 6/22/2021
QC
THIRD-ANGLE PROJECTION

SIOUX CORPORATION
ONE SIOUX PLAZA, BERESFORD, SD 57004

M-2 OIL GA24051 - M-2 OIL

REV.	DESCRIPTION	DATE	BY	TO
A-02	UPDATED CALLOUTS	07/29/21	TO	
A-01	APPROVED FOR RELEASE	06/22/21	JL	

GA24051

A-02

1/1

DWG. NO. GA24051 REV. A-02 SHEET 1/1