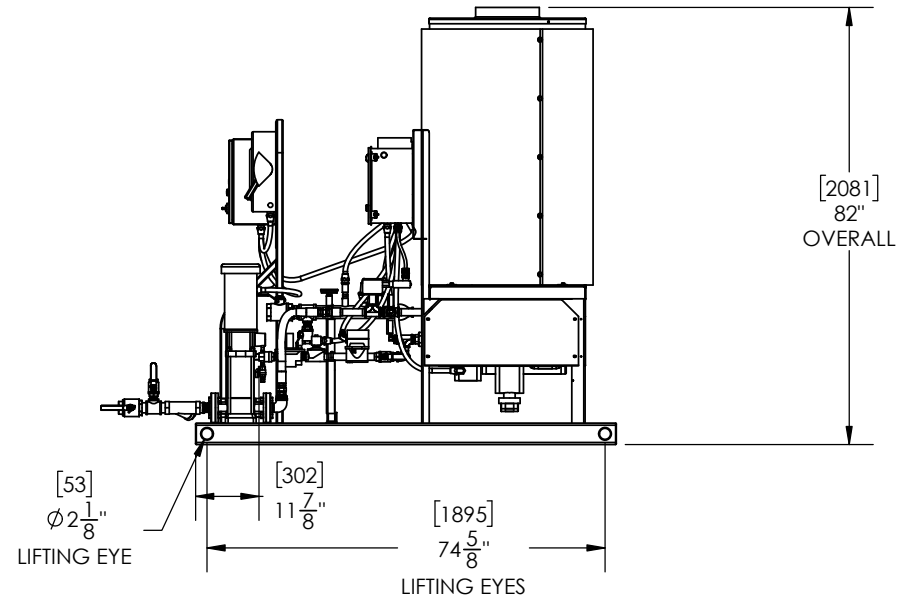
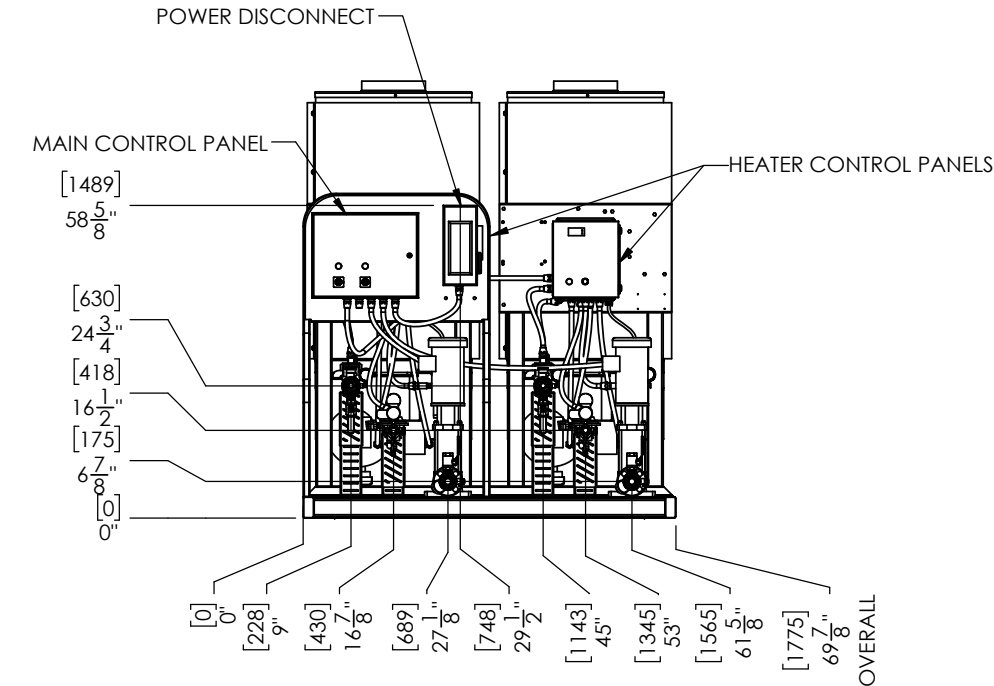
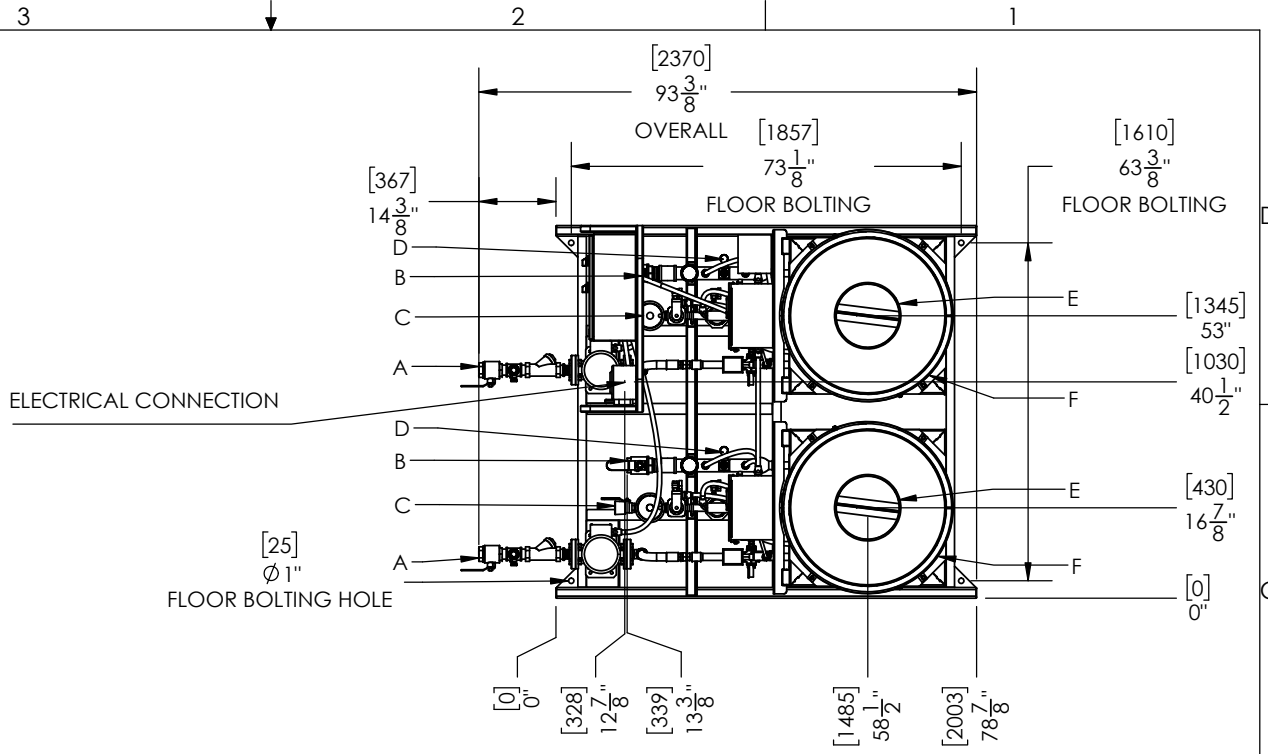


APPLICABLE MACHINES		
MODEL	APPROX. WEIGHT	
	LB	KG
M-2 GAS	3000	1361

LETTER	DESCRIPTION
A	WATER IN (1-1/2" FNPT)
B	WATER OUT (2" FNPT)
C	NAT. GAS/LP IN (1" FNPT)
D	RELIEF VALVE
E	EXHAUST (12")
F	CONDENSATE DRAIN (UNDER HEATER) (1/2" MNPT)

NOTE: SUGGESTED MINIMUM CLEARANCES FOR SERVICE ACCESS ARE 36" (914 mm) ON ALL SIDES.



**PROPRIETARY AND CONFIDENTIAL**  
 THE INFORMATION CONTAINED IN THIS DRAWING IS THE SOLE PROPERTY OF SIOUX CORP. ANY REPRODUCTION IN PART OR AS A WHOLE WITHOUT WRITTEN PERMISSION OF SIOUX CORP IS PROHIBITED.

UNLESS NOTED: DRN TO 5/21/2021  
 DIMENSIONS IN INCHES. (mm) FOR REFERENCE ONLY. CHK JL 6/22/2021  
 TOLERANCES: THIRD-ANGLE PROJECTION  
 LINEAR: ±1/2"  
 ANGULAR: ±2°

**SIOUX CORPORATION**  
 ONE SIOUX PLAZA, BERESFORD, SD 57004  
 M-2 GAS  
 GA24050 - M-2 GAS  
 GA24050  
 REV A-02 SH 1/1

REV.	DESCRIPTION	DATE	BY
A-02	UPDATED CALLOUTS	07/29/21	TO
A-01	APPROVED FOR RELEASE	06/22/21	JL

DWG. NO. GA24050 REV. A-02 SHEET 1/1