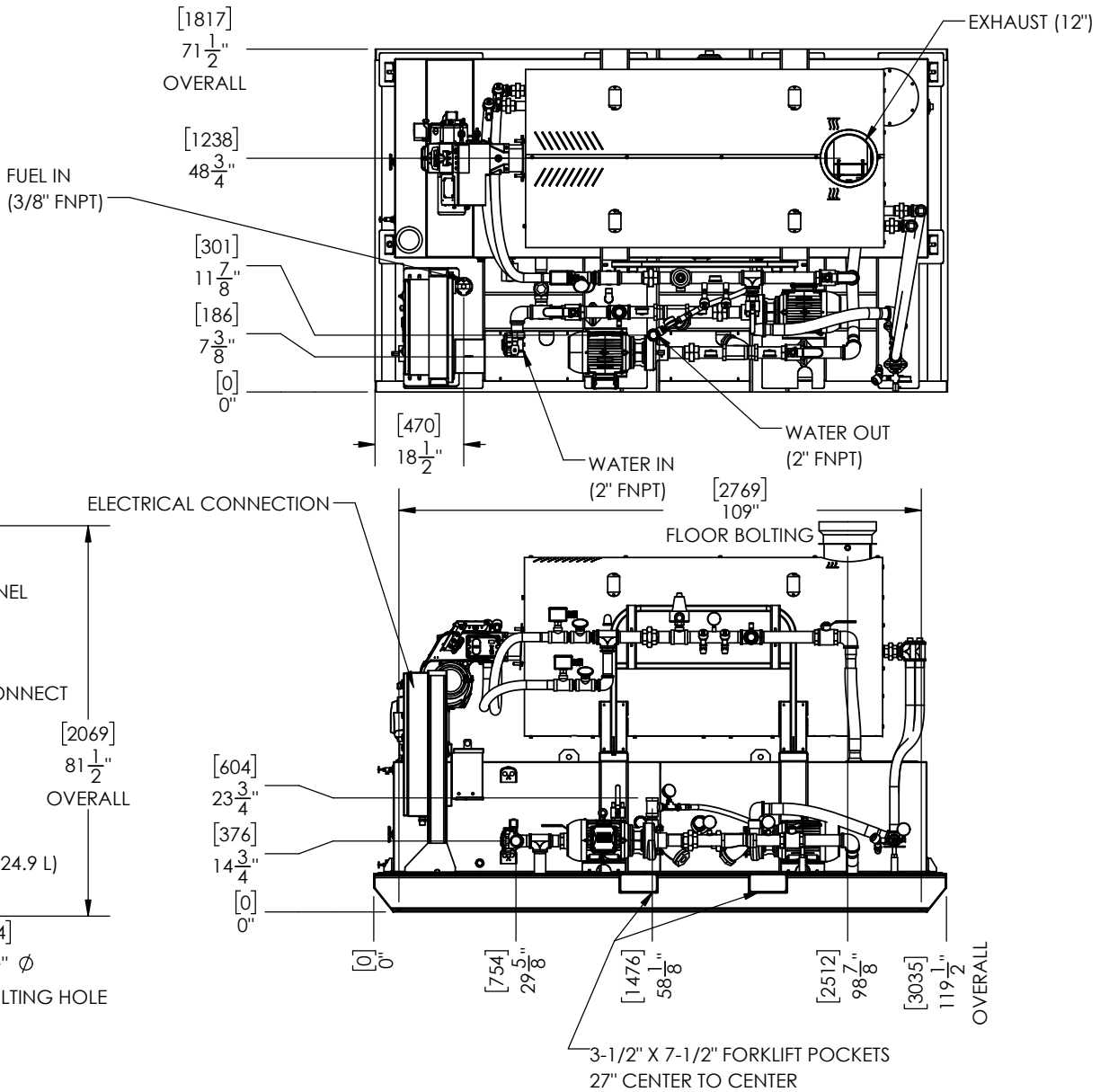
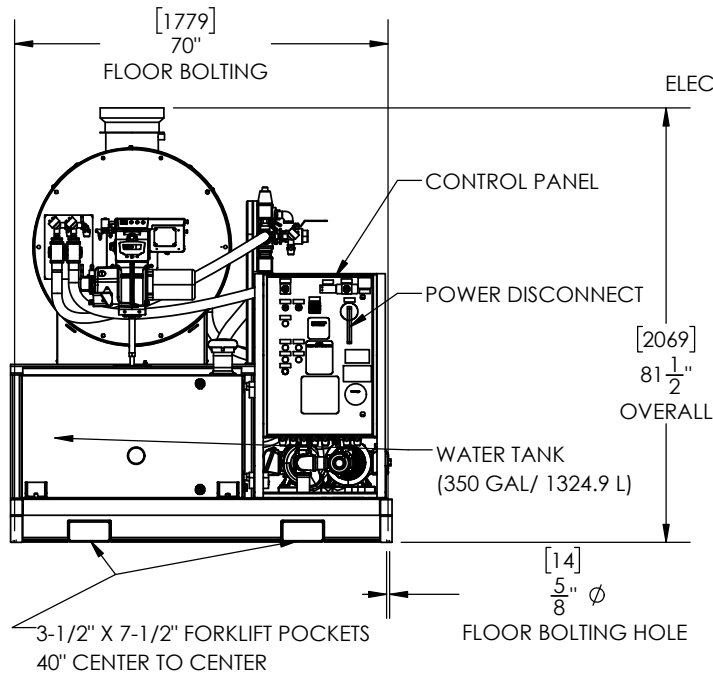


APPLICABLE MACHINES		
MODEL	APPROX. WEIGHT	
	LB	KG
PWP-HM1.7 OIL	4800	2177

NOTE 1: SUGGESTED MINIMUM CLEARANCES FOR SERVICE ACCESS ARE 36" (914 mm) ON ALL SIDES.
 NOTE 2: ALLOW AT LEAST 72" (1829 mm) AT THE FRONT OR REAR OF HEATER FOR REMOVAL OF THE COIL.
 NOTE 3: MOTORIZED EXHAUST DAMPER (NOT SHOWN) SHIPPED LOOSE FOR FIELD INSTALLATION.



PROPRIETARY AND CONFIDENTIAL
 THE INFORMATION CONTAINED IN THIS DRAWING IS THE SOLE PROPERTY OF SIOUX CORP. ANY REPRODUCTION IN PART OR AS A WHOLE WITHOUT WRITTEN PERMISSION OF SIOUX CORP IS PROHIBITED.

UNLESS NOTED:
 DIMENSIONS IN INCHES. (mm) FOR REFERENCE ONLY.
 TOLERANCES
 LINEAR: ±1/2"
 ANGULAR: ±2°

DRN LN 6/15/2021
 CHK MW 6/17/2021
 QC
 THIRD-ANGLE PROJECTION

SIOUX CORPORATION

ONE SIOUX PLAZA, BERESFORD, SD 57004

PWP-HM1.7 OIL

GA24103 - PWP-HM1.7 OIL
 GA24103
 A-02
 1/1

REV.	DESCRIPTION	DATE	BY	TO
A-02	UPDATED CALLOUTS/DIM.	08/04/21	TO	
A-01	ORIGINAL	06/17/21	MW	