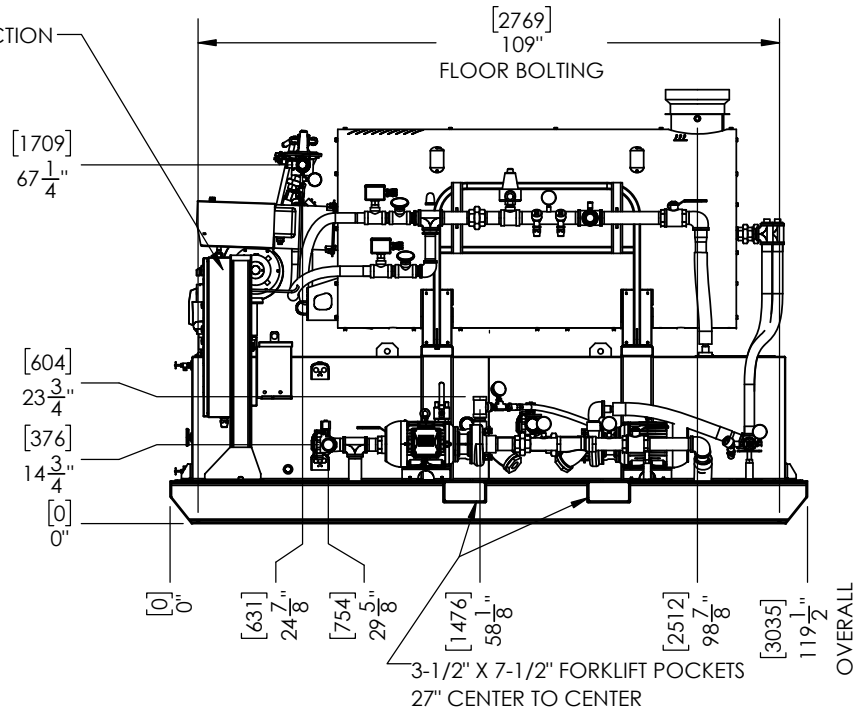
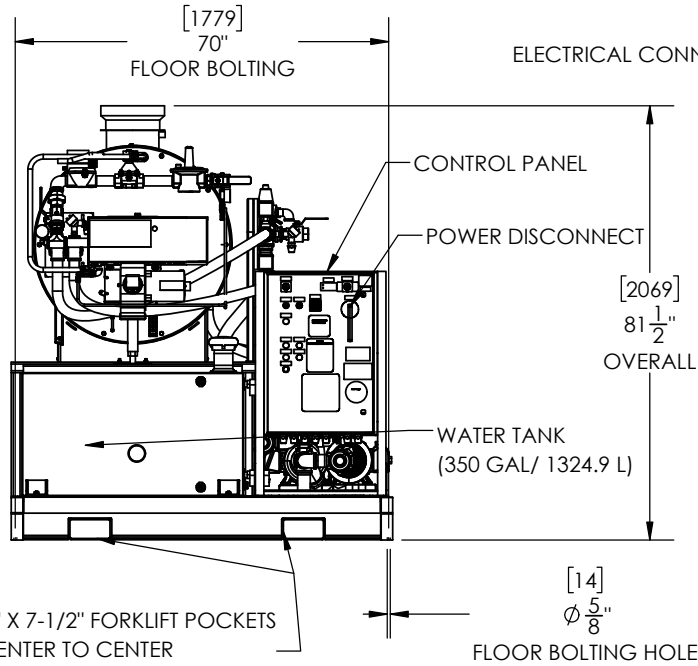
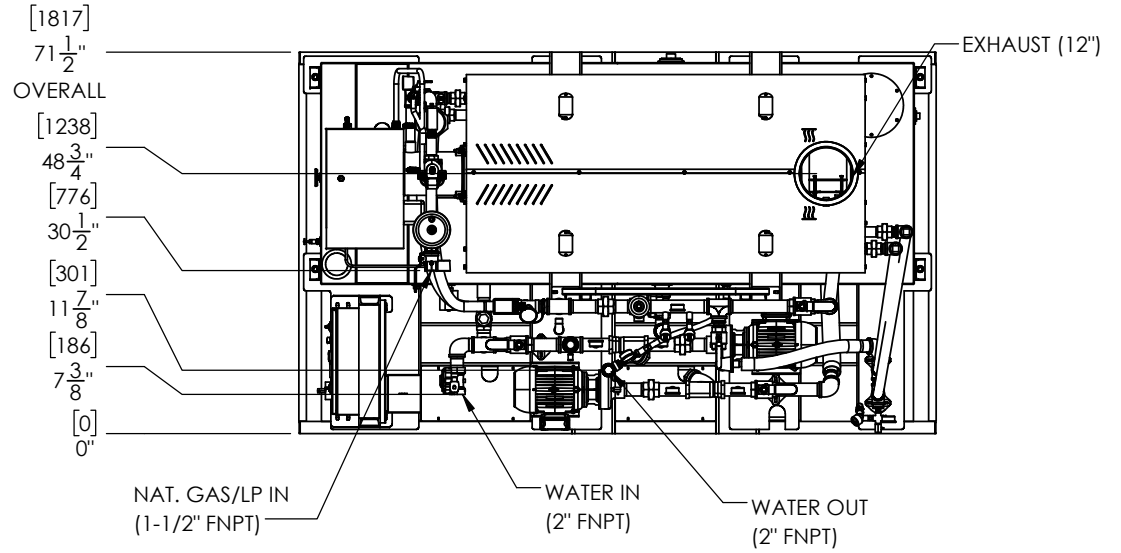


APPLICABLE MACHINES		
MODEL	APPROX. WEIGHT	
	LB	KG
PWP-HM1.7 GAS	4800	2177

NOTE 1: SUGGESTED MINIMUM CLEARANCES FOR SERVICE ACCESS ARE 36" (914 mm) ON ALL SIDES.  
 NOTE 2: ALLOW AT LEAST 72" (1829 mm) AT THE FRONT OR REAR OF HEATER FOR REMOVAL OF THE COIL.  
 NOTE 3: MOTORIZED EXHAUST DAMPER (NOT SHOWN) SHIPPED LOOSE FOR FIELD INSTALLATION.



<p><b>PROPRIETARY AND CONFIDENTIAL</b></p> <p>THE INFORMATION CONTAINED IN THIS DRAWING IS THE SOLE PROPERTY OF SIOUX CORP. ANY REPRODUCTION IN PART OR AS A WHOLE WITHOUT WRITTEN PERMISSION OF SIOUX CORP IS PROHIBITED.</p>				<p>UNLESS NOTED: DIMENSIONS IN INCHES. (mm) FOR REFERENCE ONLY.</p> <p>TOLERANCES          LINEAR: ±1/2"          ANGULAR: ±2°</p>		<p>DRN LN 6/15/2021          CHK MW 6/17/2021          QC</p>		<p><b>SIOUX CORPORATION</b>          ONE SIOUX PLAZA, BERESFORD, SD 57004</p>	
<p>DO NOT SCALE DRAWING</p>				<p>THIRD-ANGLE PROJECTION</p>		<p>SIZE A SCALE 1:36 FILE GA24102 - PWP-HM1.7 GAS</p>		<p>PWP-HM1.7 GAS</p>	
A-02	UPDATED CALLOUTS/DIM.	08/04/21	TO						
A-01	ORIGINAL	06/17/21	MW						
REV.	DESCRIPTION	DATE	BY						

DWG. NO. GA24102  
 REV. A-02  
 SHEET 1/1