

Equipment for Year Round Production

Superior Concrete and Increased Profit



WATER HEATERS

For over six decades Sioux Corporation has been a leader in providing water heating systems for ready mix, precast, prestress, vault, and block operations. Sioux manufactures standard models from 1,000,00 to 5,000,000 BTU/hour output. All units are built to ASME code and are National Board Registered.

Need a water tank? Tank skid packages with 1,000 or 2,5000 gallon tanks are available for any Sioux water heater.

Benefits of SIOUX Water Heaters

- Less expensive and safer than chemicals
- Reduces rebar corrosion, cracking and spotting
- Less expensive and more effective than heating aggregate
- Reduces the amount of cement required to compensate for lower temperatures
- Provides faster set times, faster screeding and better finish
- Provides precise water temperature for higher quality concrete

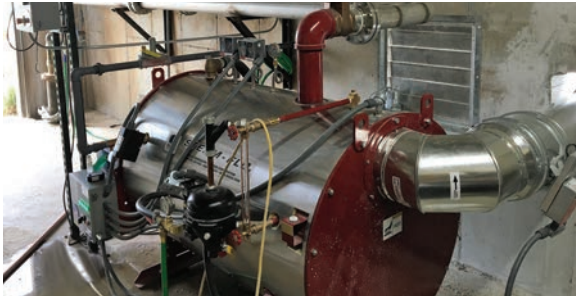


WATER CHILLERS

Sioux offers reliable Carrier water chillers. Compared to utilizing ice to cool concrete, Sioux/Carrier water chillers reduce chilling costs by up to 95%. Sioux/Carrier water chillers allow for precise control of water temperature, ensuring consistent concrete quality. Sioux/Carrier air-cooled water chiller systems are available as stationary or portable units with capacities for any size operation.



STEAM GENERATORS



Sioux Steam-Flo® Steam Generators are ideal for heating aggregates, material bunkers, overhead material storage bins, and thawing clam shell gates on aggregate bins. Sioux Steam-Flo® Steam Generators are also used to speed up curing in precast, pipe, vault, prestress and block operations. Units can be stationary mounted on legs, skid mounted, or mounted on an over the road trailer. Available in 11, 20, 25 50, and 100 BHP models, with 370-3,450 lbs of steam per hour.

AGGREGATE HEATER



Sioux's Aggre-Flo® aggregate heater is designed to heat coarse and fine aggregates to eliminate ice and frozen chunks during winter. The entire aggregate bin is heated to a consistent temperature with dry heat that does not introduce moisture into the aggregate. This allows ready mix producers to keep aggregates flowing from their bins and get consistent batch quality, even during the coldest months.

TRUCK WASH

The Sioux Truck Wash for front and rear discharge concrete trucks uses high pressure rotary spray arms to clean the hopper while only adding about five gallons of water to the drum. Separate spray bars are used for applying soap to the truck, followed by a series of rinse nozzles to complete the wash. The entire process takes about 60 seconds.

- 1,200 PSI at 40 GPM
- Winterization mode for cold weather climates
- Wash gun and high pressure hose for manual cleaning of other equipment
- Backed by an industry leading warranty



SIOUX CORPORATION

1 Sioux Plaza • Beresford, SD 57004-1500 USA
Tel: (605) 763-3333 • Toll Free: (888) 763-8833
email@sioux.com

