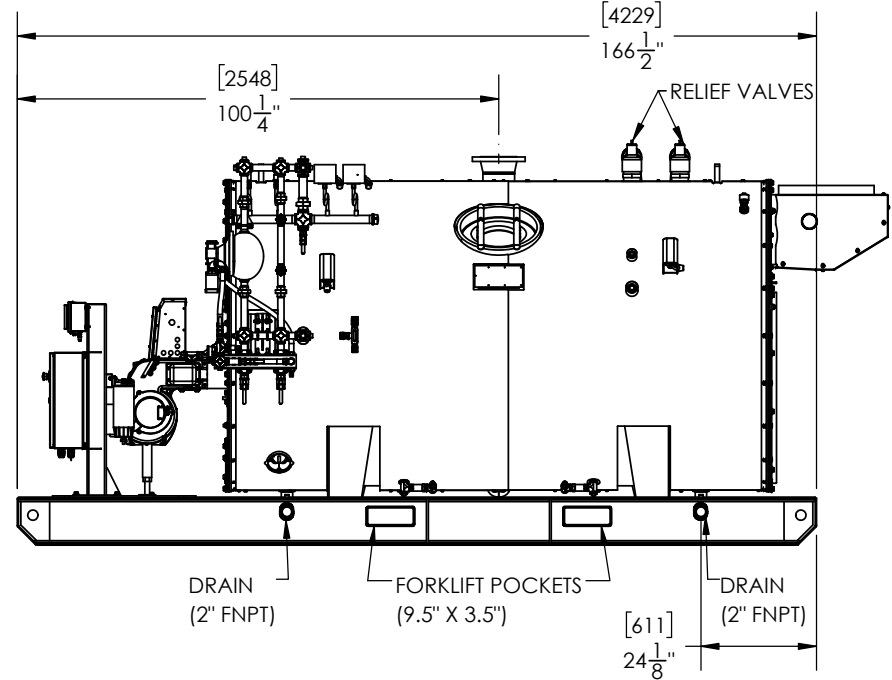
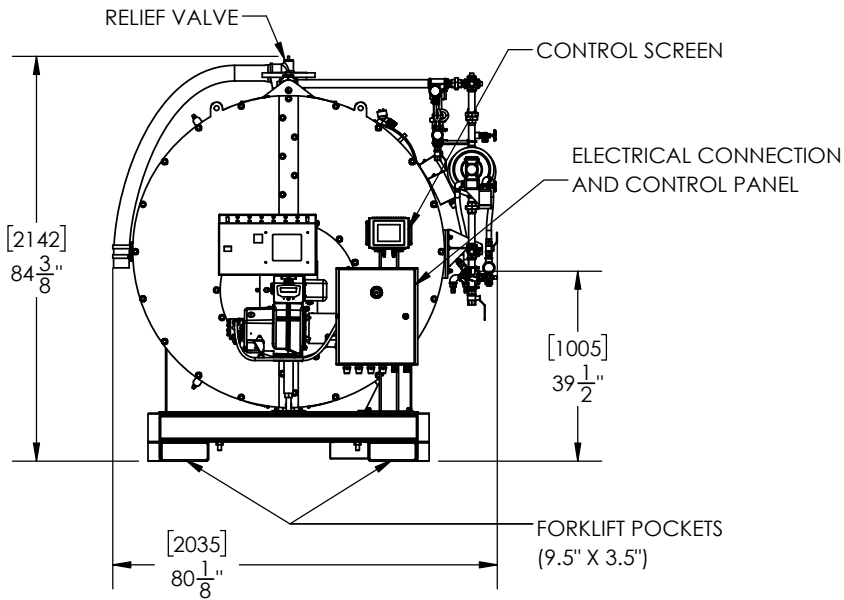
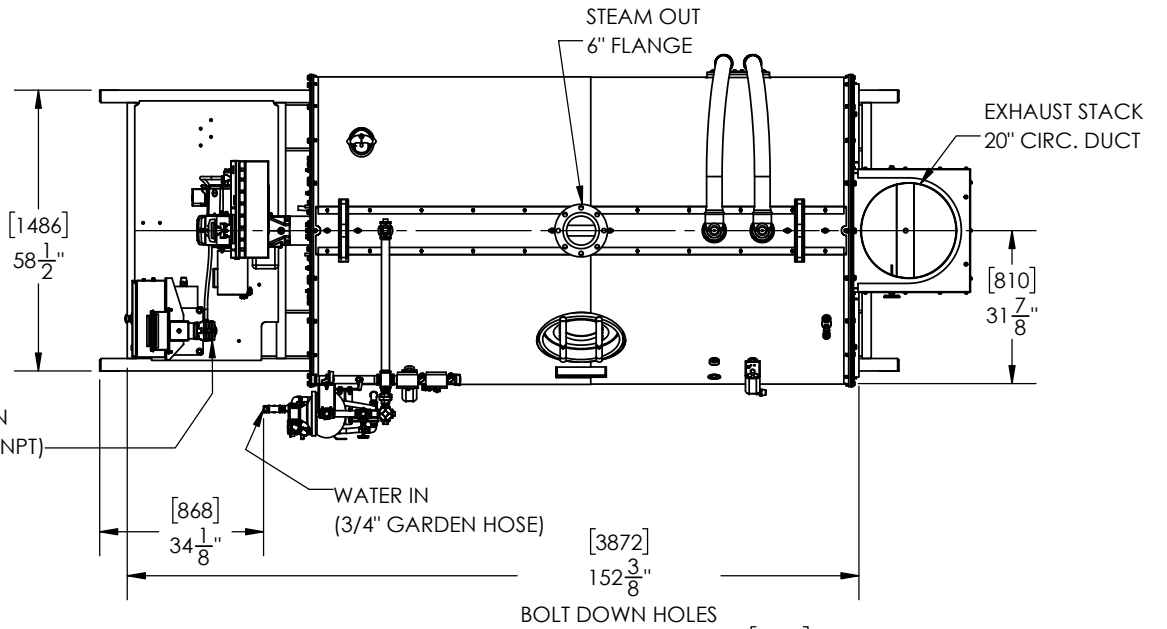
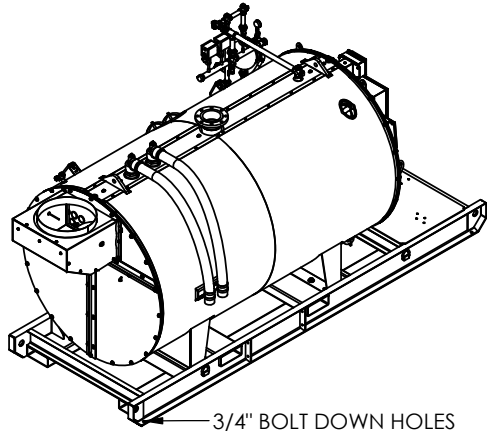


| MODEL | APPROX. WEIGHT | |
|---------------|----------------|-------|
| | LB | KG |
| SF-100D (DRY) | 9,250 | 4,200 |
| SF-100D (WET) | 16000 | 7300 |

SUGGESTED MINIMUM CLEARANCES FOR SERVICE ACCESS ARE 48" (1200mm) FOR THE ENDS AND 24" (600mm) ALONG EACH SIDE



PROPRIETARY AND CONFIDENTIAL
THE INFORMATION CONTAINED IN THIS DRAWING IS THE SOLE PROPERTY OF SIOUX CORP. ANY REPRODUCTION IN PART OR AS A WHOLE WITHOUT WRITTEN PERMISSION OF SIOUX CORP IS PROHIBITED.

UNLESS NOTED:
DIMENSIONS IN INCHES. (mm) FOR REFERENCE ONLY.
TOLERANCES
LINEAR: ±1/2"
ANGULAR: ±2°

DRN JL 6/2/2020
CHK LN 8/6/2020
QC
THIRD-ANGLE PROJECTION

SIOUX CORPORATION
ONE SIOUX PLAZA, BERESFORD, SD 57004

SF-100D SKID MOUNTED

SIZE A SCALE 1:40 FILE GA23267 - SF-100D

GA23267

REV A-04 SH 1/1

| REV. | DESCRIPTION | DATE | BY |
|------|------------------------|----------|----|
| A-04 | UPDATED NOTES/CALLOUTS | 08/05/21 | JS |
| A-02 | STANDARD UNIT UPDATES | 09/16/20 | JL |
| A-01 | ORIGINAL | 08/06/20 | LN |

DO NOT SCALE DRAWING

DWG. NO. GA23267 REV. A-04 SHEET 1/1