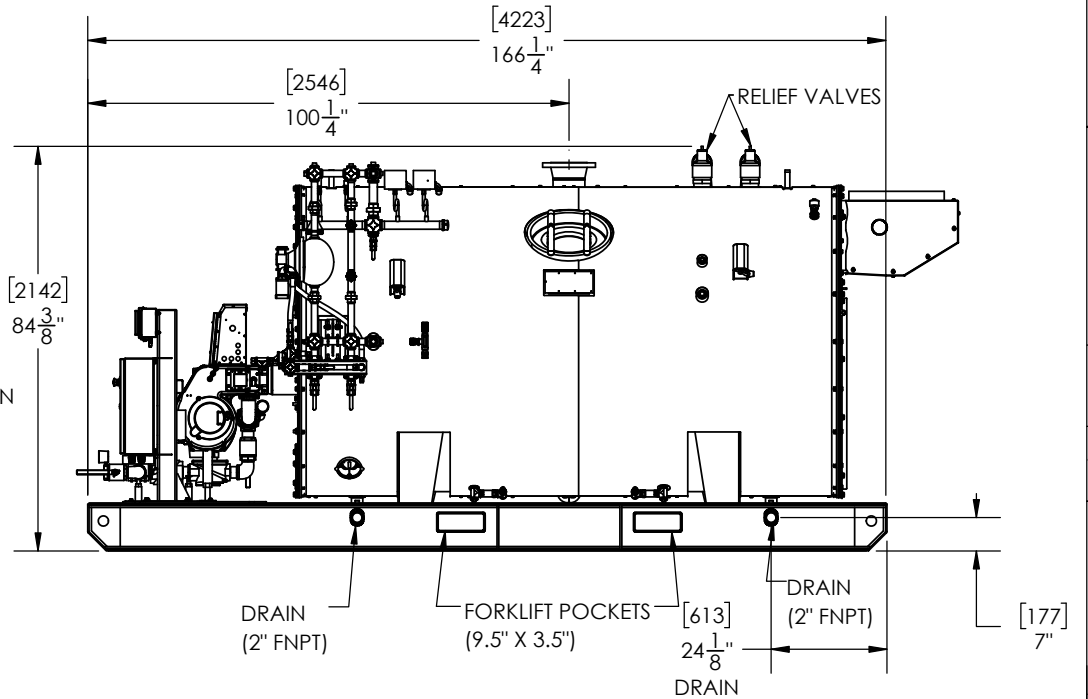
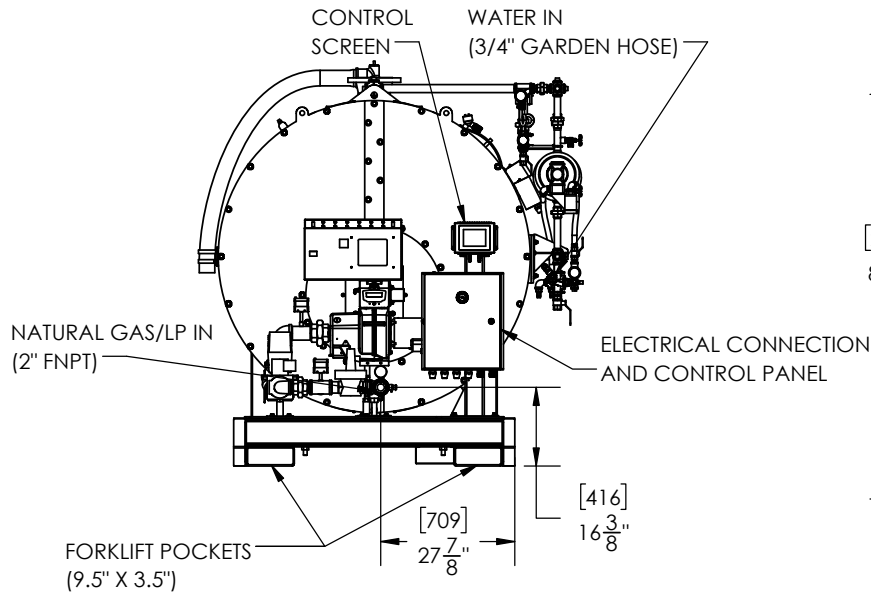
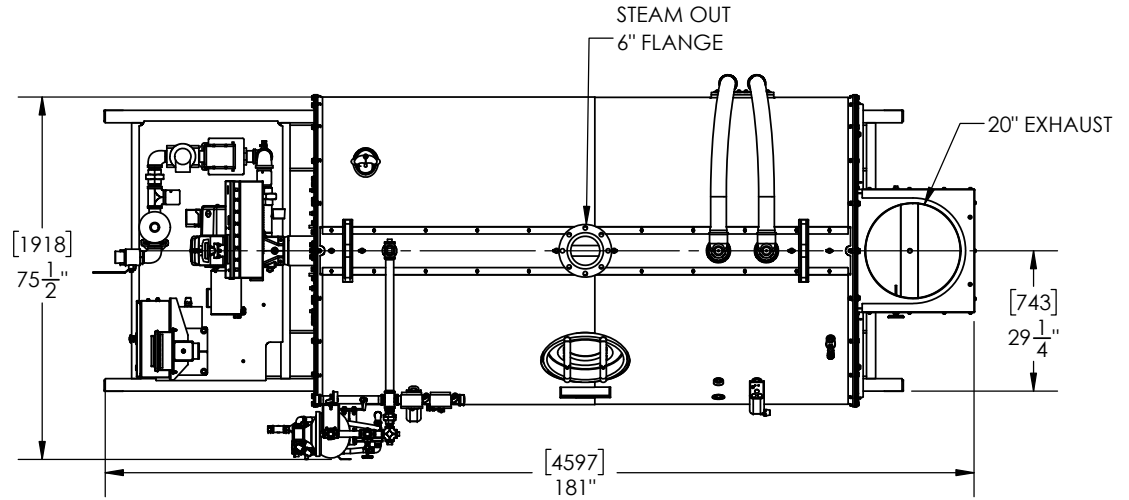
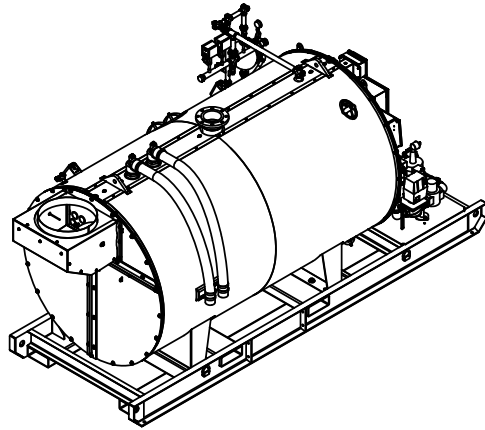


MODEL	APPROX. WEIGHT	
	LB	KG
SF-100G (DRY)	9300	4250
SF-100G (WET)	16500	7500

SUGGESTED MINIMUM CLEARANCES FOR SERVICE ACCESS ARE 48" (1200mm) FOR THE ENDS AND 24" (600mm) ALONG EACH SIDE



DWG. NO. GA23493 REV. A-05 SHEET 1/1

A-05	UPDATED NOTES/CALLOUTS	08/02/21	JS	PROPRIETARY AND CONFIDENTIAL THE INFORMATION CONTAINED IN THIS DRAWING IS THE SOLE PROPERTY OF SIOUX CORP. ANY REPRODUCTION IN PART OR AS A WHOLE WITHOUT WRITTEN PERMISSION OF SIOUX CORP IS PROHIBITED. DO NOT SCALE DRAWING	UNLESS NOTED: DIMENSIONS IN INCHES. (mm) FOR REFERENCE ONLY.	DRN JL 6/2/2020	SIOUX CORPORATION ONE SIOUX PLAZA, BERESFORD, SD 57004 SF-100G SKID MOUNTED GA23493 - SF-100G
A-04	UPDATED NOTES/CALLOUTS	07/28/21	JS		TOLERANCES	CHK LN 8/6/2020	
A-03	ADJUSTED WEIGHT	04/21/21	LN		THIRD-ANGLE PROJECTION	GC	
A-02	STANDARD UNIT UPDATES	09/16/20	JL		LINEAR: ±1/2"	SIZE A SCALE 1:64 FILE	
A-01	ORIGINAL	08/06/20	LN		ANGULAR: ±2°	GA23493 - SF-100G	
REV.	DESCRIPTION	DATE	BY				REV A-05 SH 1/1

GA23493

REV A-05 SH 1/1