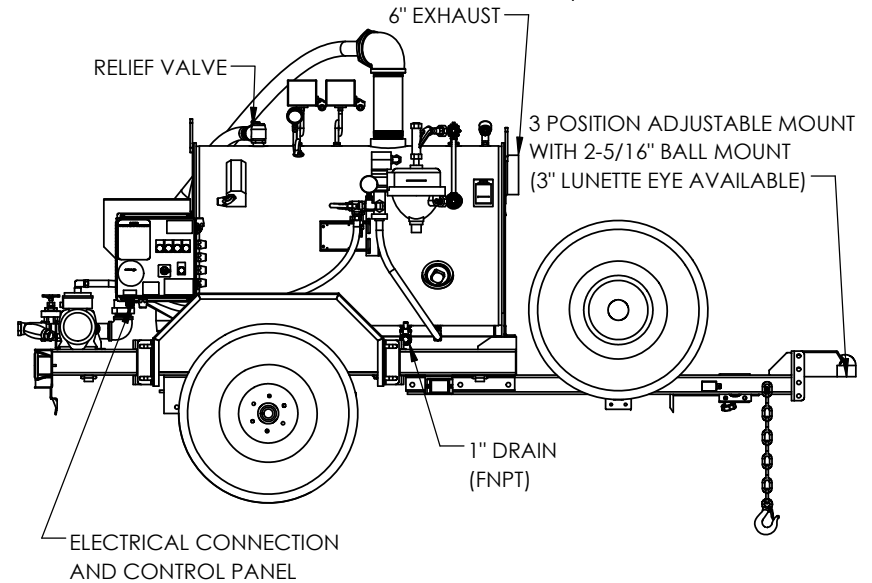
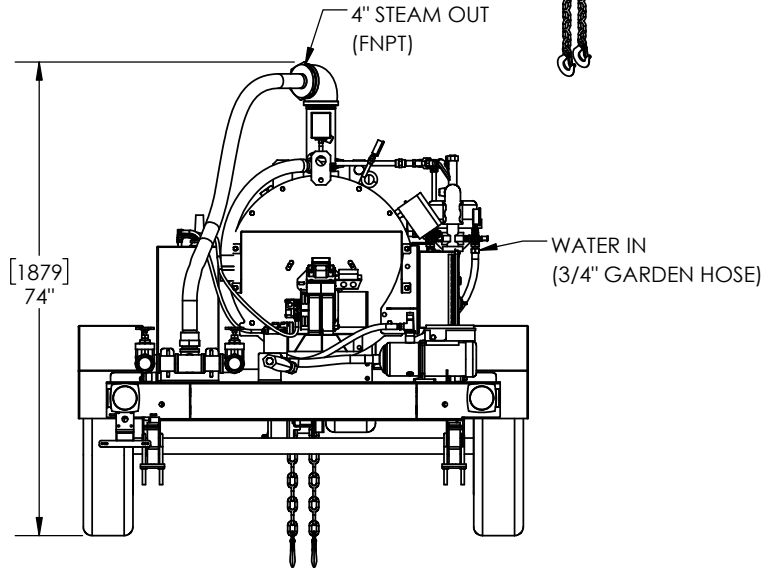
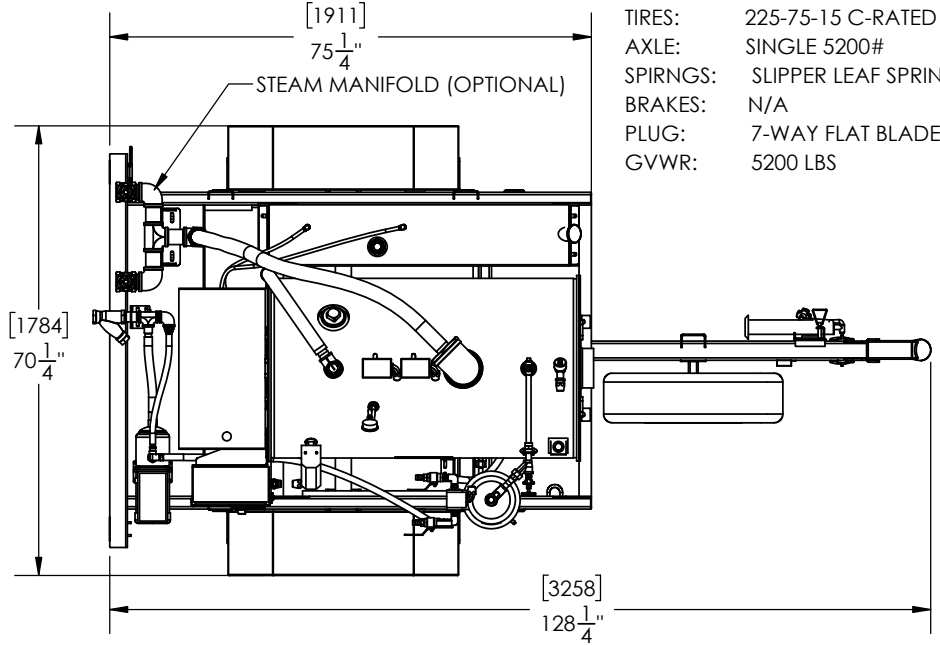
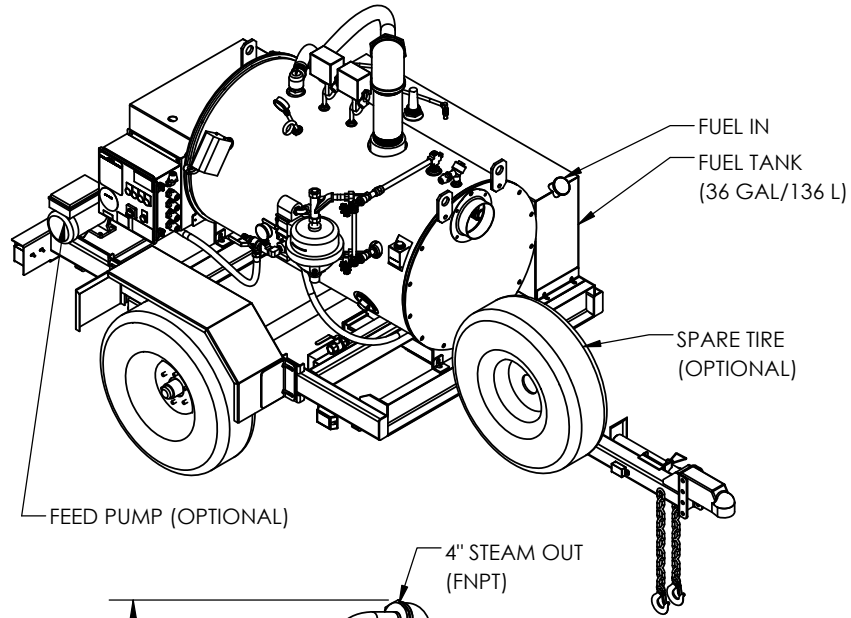


MODEL	APPROX. WEIGHT	
	LB	KG
SF11D-TM (DRY)	2000	950
SF11D-TM (WET)	2750	1250

- WHEELS: STEEL 15" X 6"
- 6 BOLT 5.5" B.C.
- TIRES: 225-75-15 C-RATED
- AXLE: SINGLE 5200#
- SPRINGS: SLIPPER LEAF SPRINGS
- BRAKES: N/A
- PLUG: 7-WAY FLAT BLADE
- GVWR: 5200 LBS



A-05	UPDATED TRAILER NOTES	07/28/21	JS
A-03	UPDATED TRAILER NOTES	12/09/20	JZ
A-02	ADDED NOTE	12/07/20	JZ
A-01	ORIGINAL	12/01/20	MW
REV.	DESCRIPTION	DATE	BY

PROPRIETARY AND CONFIDENTIAL

THE INFORMATION CONTAINED IN THIS DRAWING IS THE SOLE PROPERTY OF SIOUX CORP. ANY REPRODUCTION IN PART OR AS A WHOLE WITHOUT WRITTEN PERMISSION OF SIOUX CORP IS PROHIBITED.

DO NOT SCALE DRAWING

UNLESS NOTED:	DRN	JZ 11/25/2020
DIMENSIONS IN INCHES. (mm) FOR REFERENCE ONLY.	CHK	MW 12/1/2020
TOLERANCES	GC	
THIRD-ANGLE PROJECTION	SIZE	A
LINEAR: ±1/2"	SCALE	1:30
ANGULAR: ±2°	FILE	

SIOUX CORPORATION
ONE SIOUX PLAZA, BERESFORD, SD 57004

SF11D-TM

GA23778

REV A-05 SH 1/1

DWG. NO. GA23778 REV. A-05 SHEET 1/1