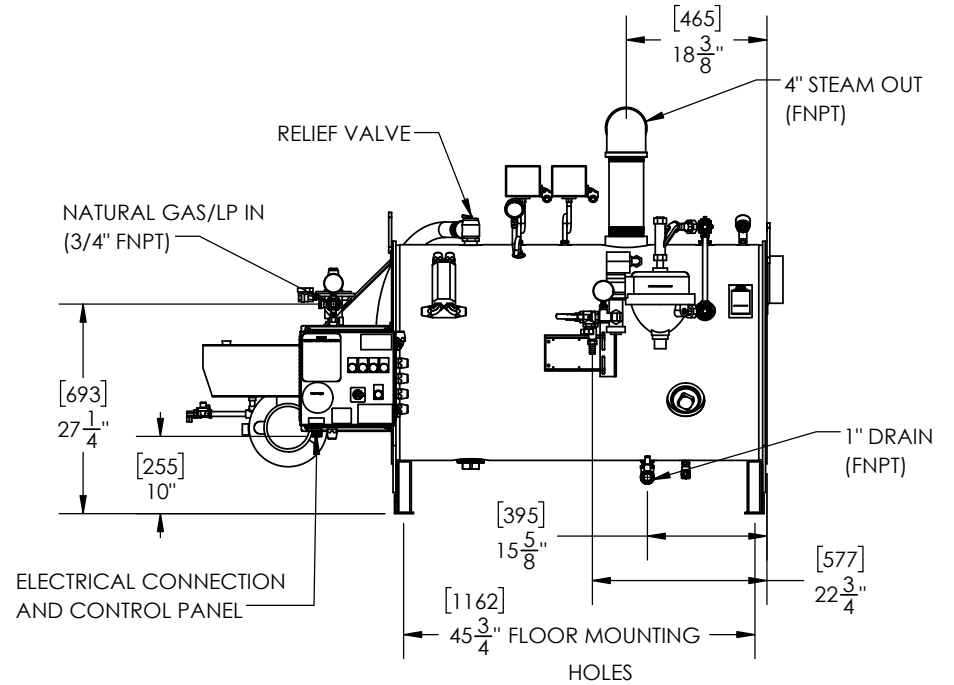
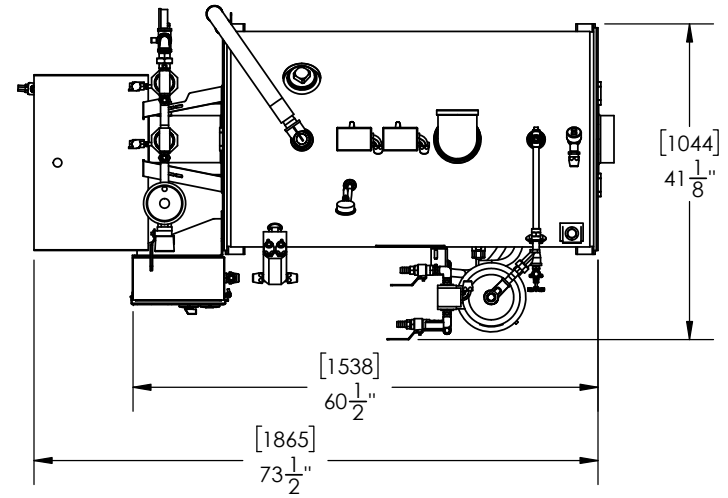
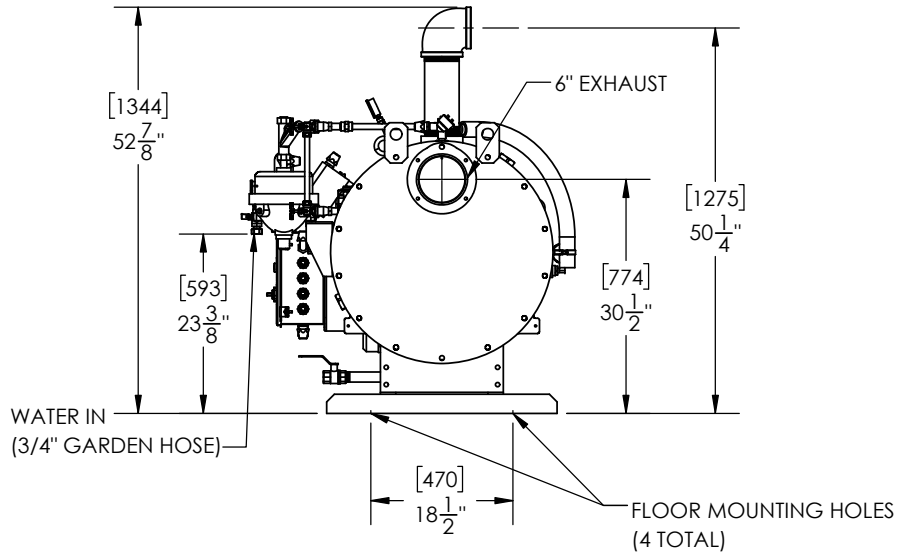
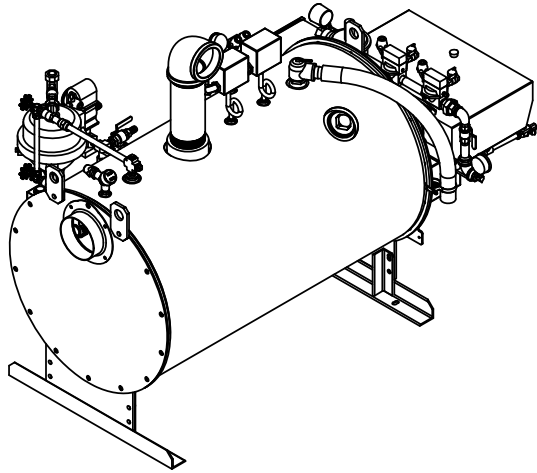


MODEL	APPROX. WEIGHT	
	LB	KG
SF-11 GAS LEG MOUNT (DRY)	1300	600
SF-11 GAS LEG MOUNT (WET)	1800	850

NOTE: SUGGESTED MINIMUM CLEARANCE FOR SERVICE ACCESS ARE 48" (1200mm) FOR THE ENDS AND 24" (600mm) ALONG EACH SIDE



**PROPRIETARY AND CONFIDENTIAL**

THE INFORMATION CONTAINED IN THIS DRAWING IS THE SOLE PROPERTY OF SIOUX CORP. ANY REPRODUCTION IN PART OR AS A WHOLE WITHOUT WRITTEN PERMISSION OF SIOUX CORP IS PROHIBITED.

UNLESS NOTED:	DRN JS 5/26/2021
DIMENSIONS IN INCHES. (mm) FOR REFERENCE ONLY.	CHK JZ 5/26/2021
TOLERANCES	QC
THIRD-ANGLE PROJECTION	
LINEAR: ±1/2"	
ANGULAR: ±2°	

**SIOUX CORPORATION**  
ONE SIOUX PLAZA, BERESFORD, SD 57004

SF11G LEG MOUNTED

GA24053 - SF11 GAS LEG MOUNTED

REV.	DESCRIPTION	DATE	BY
A-03	UPDATED NOTES/CALLOUTS	07/28/21	JS
A-02	ADDED ANTIFREEZE PORT	06/15/21	LN
A-01	ORIGINAL	05/26/21	JZ

GA24053

REV A-03

SH 1/1

DWG. NO. GA24053 REV. A-03 SHEET 1/1